

ORGANIZATIONAL AND DIRECT SUPPORT
MAINTENANCE REPAIR PARTS AND SPECIAL TOOLS LIST
TENTAGE FOR HAWK MISSILE EQUIPMENT
TENT, FRAME TYPE, MAINTENANCE, 32 FT BY 20 FT
(FSN 8340-951-6419)
TENT, MAINTENANCE MISSILE TEST SHOP
(FSN 8340-753-6255)
TENT, PULSE ACQUISITION RADAR, AFT
(FSN 8340-753-6260)
TENT, PULSE ACQUISITION RADAR FRONT
(FSN 8340-753-6259)
TENT, RANGE ONLY RADAR, CW ACQUISITION
AND CW ILLUMINATOR (FSN 8340-823-6965)
TENT, HIGH POWER ILLUMINATOR, FRONT
(FSN 8340-985-7432)
TENT, HIGH POWER ILLUMINATOR, AFT
(FSN 8340-985-7431) COVER
HAWK MISSILE (FSN 8340-064-5059)

TECHNICAL MANUAL }
 No. 10-8340-203-23P }

HEADQUARTERS
 DEPARTMENT OF THE ARMY
 WASHINGTON, D. C., 15 October 1973

ORGANIZATIONAL AND DIRECT SUPPORT MAINTENANCE REPAIR PARTS
 AND SPECIAL TOOLS LIST

TENTAGE FOR HAWK MISSILE EQUIPMENT
 TENT, FRAME TYPE, MAINTENANCE, 32 FT BY 20 FT
 (FSN 8340-9514419)

TENT, MAINTENANCE MISSILE TEST SHOP
 (FSN 8340-753-6255)

TENT, PULSE ACQUISITION RADAR, AFT
 (FSN 8340-7534260)

TENT, PULSE ACQUISITION RADAR, FRONT
 (FSN 8340-753-6259)

TENT, RANGE ONLY RADAR, CW ACQUISITION
 AND CW ILLUMINATOR, (FSN 8340-823-6965)

TENT, HIGH POWER ILLUMINATOR, FRONT
 (FSN 8340-985-7432)

TENT, HIGH POWER ILLUMINATOR, AFT
 (FSN 8340-985-7431)

COVER, HAWK MISSILE (FSN 8340-064-5059)

Current as of 20 August 1973

| | Page | Illus Figure |
|--|-------|-----------------|
| S ECTION I. INTRODUCTION | | |
| II. PRESCRIBED LOAD ALLOWANCE (Not applicable) | | |
| III. REPAIR PARTS LIST FOR ORGANIZATIONAL MAINTENANCE | ----- | 1 |
| PART ONE. Maintenance Missile Test Shop Tent | 1 | |
| Group 01. Tent anchoring components | 1 | 1 |
| 02. Tentage | 1 | 1 |
| 03. Tent support components | 1 | 2 |
| PART TWO. Pulse Acquisition Radar Tent (Front) | 2 | |
| Group 01. Tent anchoring components | 2 | 3 |
| 02. Tentage | 2 | 3 |
| 03. Tent support components | 2 | 4 |
| PART THREE. Pulse Acquisition Radar Tent (Aft) | 3 | |
| Group 01. Tent anchoring components | 3 | 5 |
| 02. Tentage | 3 | 5 |
| 03. Tent support components | 3 | 6 |
| PART FOUR. Range Only Radar, CW Acquisition Radar, and CW Illuminator Radar Tent | 4 | |
| Group 01. Tent anchoring components | 4 | 7 |
| 02. T e n t a g e | 4 | 7 |
| 03. Tent support components | 4 | 8 |

*This manual supersdes TM 10-8340-203-23P, 18 August 1970.

| | Page | Illus Figure |
|---|------|-----------------|
| PART FIVE. High Power Illuminator Tent (Front) _____ | 5 | |
| Group 01. Tent anchoring components _____ | 5 | 9 |
| 02. Tentage _____ | 5 | 9 |
| 03. Tent support components _____ | 5 | 10 |
| 04. Tent accessories _____ | 6 | 11 |
| PART SIX. High Power Illuminator Tent (Aft) _____ | 6 | |
| Group' 01. Tent anchoring components _____ | 6 | 12 |
| 02. Tentage _____ | 6 | 12 |
| 03. Tent support components _____ | 6 | 13 |
| 04. Tent accessories _____ | 7 | 14 |
| PART SEVEN. Hawk Missile Cover _____ | 7 | |
| Group 05. Cover _____ | 7 | 15, 16, 17 |
| SECTION IV. SPECIAL TOOLS, TEST AND SUPPORT EQUIPMENT (Not applicable). | | |
| V. REPAIR PARTS LIST FOR DIRECT SUPPORT MAINTENANCE _____ | 8 | |
| PART ONE. Maintenance Missile Test Shop Tent _____ | 8 | |
| Group 01. Tent anchoring components _____ | 8 | 1 |
| 02. Tentage _____ | 8 | 1 |
| 03. Tent support components _____ | 9 | 2 |
| PART TWO. Pulse aquisition Radar Tent (Front) ----- | 9 | |
| Group 01. Tent anchoring components _____ | 9 | 3 |
| 02. Tentage ----- | 10 | 3 |
| 03. Tent support components ----- | 11 | 4 |
| PART THREE. Pulse Acquisition Radar Tent (Aft) ----- | 11 | |
| Group 01. Tent anchoring components ----- | 11 | 5 |
| 02. Tentage _____ | 12 | 5 |
| 03. Tent support components _____ | 13 | 6 |
| PART FOUR. Range Only Radar, CW Acquisition Radar, and CW Illuminator Radar Tent ____ | 13 | |
| Group 01. Tent anchoring components _____ | 13 | 7 |
| 02. Tentage _____ | 14 | 7 |
| 03. Tent support components _____ | 14 | 8 |
| PART FIVE. High Power Illuminator Tent (Front) ----- | 15 | |
| Group 01. Tent anchoring components _____ | 15 | 9 |
| 02. Tentage _____ | 16 | 9 |
| 03. Tent support components _____ | 17 | 10 |
| 04. Tent accessories _____ | 17 | 11 |
| PART SIX. High Power Illuminator Tent (Aft) _____ | 17 | |
| Group 01. Tent anchoring components _____ | 17 | 12 |
| 02. Tentage _____ | 17 | 12 |
| 03. Tent support components _____ | 18 | 13 |
| 04. Tent accessories _____ | 18 | 14 |
| PART SEVEN. Hawk Missile Cover _____ | 19 | |
| Group 05. Cover _____ | 19 | 15, 16, 17 |
| SECTION VI. SPECIAL TOOLS, TEST AND SUPPORT EQUIPMENT (Not applicable) | | |
| VII. FEDERAL STOCK NUMBER AND REFERENCE NUMBER INDEX _____ | | 39 |

SECTION I. INTRODUCTION

1. Scope

a. This manual lists repair parts, special tools, test and support equipment required for the performance of organizational, and direct support maintenance of the tentage.

b. Repair parts listed represent those authorized for use at indicated maintenance levels and will be requisitioned on an "as required" basis until stockage is justified by demand in accordance with AR 710-2.

2. General

This repair Parts and Special Tools List is divided into the following sections:

a. *Prescribed Load Allowance List-Section II.* (Not applicable)

b. *Repair Parts List-Section HZ.* A list of repair parts authorized at the organizational level for the performance of maintenance. The list also includes parts which must be removed for replacement of the authorized parts. Parts lists are composed of assembly groups in ascending numerical sequence, with parts in each group listed in figure and item number sequence.

c. *Special Tools, Test and Support Equipment-Section IV.* A list of special tools, test and support equipment authorized for the performance of maintenance at the organizational level. (Not applicable).

d. *Repair Parts List-Section V.* A list of repair parts authorized at the direct support level for the performance of maintenance. The list also includes parts which must be removed for the replacement of the authorized parts. Parts lists are composed of assembly groups in ascending numerical sequence, with parts in each group listed in figure and item number sequence.

e. *Special Tools, Test and Support Equipment-Section VI.* A list of special tools, test and support equipment authorized for the performance of maintenance at the direct support level. (Not applicable).

f. *Federal Stock Number and Reference Number Index-Section VII.* A list, in ascending numerical sequence, of all Federal stock numbers appearing in the listings, followed by a list, in alpha-numeric sequence, of all reference numbers appearing in the listings, Federal stock number

and reference numbers are cross-referenced to each illustration figure and/or item number appearance.

3. Explanation of Columns

The following provides an explanation of columns found in the tabulated listings in Sections III through VII.

a. *Source, Maintenance, and Recoverability Codes (SMR).* The SMR code is a five letter code composed of three parts consisting of a (2) two position source code, a two (2) position maintenance code, and a one (1) position recoverability code. Support items listed in this RPSTL assigned maintenance and recoverability codes and no source code can be requisitioned, with justification, through normal supply channels by use of the manufacturer's code and part number. Such support items are NOT normally stocked.

(1) *Source code.* Indicates the manner of acquiring support items for maintenance, repair, or overhaul of end items. Source codes entered in the *first* and *second* positions as follows:

| | |
|----|---|
| PA | Item procured and stocked for anticipated or known usage. |
| PB | Item procured and stocked for insurance purposes because essentiality dictates that a minimum quantity be available in the supply system. |
| PC | Items procured and stocked and which otherwise would be coded PA except that is deteriorative in nature. |
| PD | Support item, excluding support equipment, procured for initial issue or outfitting and stocked only for subsequent or additional initial issues or outfittings. NOT subject to automatic replenishment. |
| PE | Support equipment procured and stocked for initial issue or outfitting to specified maintenance repair activities. |
| PF | Support equipment which will not be stocked but which will be centrally procured on demand. |
| PG | Item procured and stocked to provide for sustained support for life of the equipment. It is applied to an item peculiar to the equipment which, because of probable discontinuance or shutdown of production facilities, would prove uneconomical to reproduce at a later date, |
| KD | An item of depot overhaul/repair kit and not purchased separately. |

T M 1 0 - 8 3 4 0 - 2 0 3 - 2 3 P

| <i>Code</i> | <i>Definition</i> |
|-------------|---|
| KF | An item of a maintenance kit and not purchase separately |
| KB | Item included in both a depot overhaul/repair kit and a maintenance kit. |
| MO | Item to be manufactured or fabricated at organizational level. |
| MF | Item to be manufactured or fabricated at direct support maintenance level. |
| MH | Item to be manufactured or fabricated at general maintenance support level. |
| MD | Item to be manufactured or fabricated at depot maintenance level. |
| AO | Item to be assembled at organizational level. |
| AF | Item to be assembled at direct support maintenance level. |
| AH | Item to be assembled at general support maintenance level. |
| AD | Item to be assembled at depot maintenance level. |
| XA | Item is NOT procured or stocked because the requirements for the item will result in replacement of the next higher assembly. |
| XB | Item NOT procured or stocked. If not available through salvage, requisition. |
| XC | Installation drawing, diagram, instruction sheet, or field service drawing that is identified by manufacturer's part number. |
| XD | A low mortality item that is not stocked. When required, items will be requested and provided through normal supply channels. |

NOTE

Cannibalization or salvage may be used as a source of supply for any items coded above except those coded XA and support items restricted by AR 700-42.

(2) *Maintenance codes.* The maintenance code "entered in the *third* position indicates the lowest maintenance level authorized to remove, replace, and use the item. The maintenance code entered in the *fourth* position indicates whether the item is to be repaired and identifies the lowest maintenance level with the capability to perform complete repair (i.e., all authorized maintenance functions). When a maintenance code is not used in the *fourth* position, a dash (-) will be entered.

| <i>Code</i> | <i>Application/Explanation</i> |
|-------------|--|
| C | Denotes crew or operator maintenance performed within organizational maintenance (third position). |
| O | Item is removed, replace, used (third position), or complete repair (fourth position) at the organizational level. |
| F | Item is removed, replace, used (third position), or complete repair (fourth po- |

| <i>Code</i> | <i>Application/Explanation</i> |
|-------------|--|
| | sition) at the direct support maintenance level. |
| H | Item is removed, replaced, used (third position) or complete repair (fourth position) at the general support maintenance level. |
| D | Item is removed, replaced, used (third position) or complete repair (fourth position) at the depot maintenance level. |
| L | Repair restricted to designated specialized repair activity (fourth position). |
| Z | Non-repairable. No repairs authorized (fourth position). |
| B | No repair is authorized. The item may be reconditioned by adjusting, lubricating, etc., at the <i>user</i> level. No parts or special tools are procured for maintenance of this item (fourth position). |

(3) *Recoverability code.* The recoverability code entered in the *fifth* position indicates the disposition action on unserviceable items.

| <i>Code</i> | <i>Definition</i> |
|-------------|--|
| Z | Non-repairable item. When unserviceable, condemn and dispose at the level indicated in position three (3). |
| O | Repairable item. When uneconomically repairable, condemn and dispose at organizational level, |
| F | Repairable item. When uneconomically repairable, condemn and dispose at direct support level. |
| H | Repairable item. When uneconomically repairable, condemn and dispose at general support level. |
| D | Repairable item. When beyond lower level repair capability, return to depot. Condemnation and disposal not authorized below depot level. |
| L | Repairable item. Repair, condemnation, and disposal not authorized below depot/specialized repair activity level. |
| A | Item requires special handling or condemnation procedures because of specific reasons (i.e., precious metal content, high dollar value, critical material, or hazardous material). |

b. Federal Stock Number. Indicates the Federal stock number assigned to the item and will be used for requisitioning purposes.

c. Description. Indicates the Federal item name and a minimum description required to identify the item. The last line indicates the reference number followed by the applicable Federal Supply Code for Manufacturer (FSCM) in parentheses. The FSCM is used as an element in item identification to designate manufacturer or distributor or Government agency, etc., and is identified in SB 708-42. Items that are included in kits and

sets are listed below the name of the kit or set with quantity of each item in the kit or set indicated in front of the item name.

d. Unit of Measure (U/M). Indicates the standard or basic quantity by which the listed item is used in performing the actual maintenance function. This measure is expressed by a two-character alphabetical abbreviation, e.g., ea, in, pr, etc., and is the basis used to indicate quantities and allowances in subsequent columns.

e. Quantity Incorporated in Unit. Indicates the quantity of the item used in the breakout shown on the illustration figure, which is prepared for an assembly group or an assembly. A “V” appearing in this column in lieu of a quantity indicates that no specific quantity is applicable, e.g., shims, spacers, etc.

f. Fifteen-Day Organizational Maintenance Allowances.

(1) Items authorized for use as required but not for initial stockage are identified with an asterisk in the allowance column.

(2) The allowance columns are divided into four subcolumns. Indicated in each subcolumn is the total quantity of special tools authorized for the number of equipments supported. (When special tools are not required, enter statement “Not applicable”.)

g. Thirty-Day DS/Maintenance Allowance.

(1) Items authorized for use as required but not for initial stockage are identified with an asterisk in the allowance column.

(2) The allowance columns are divided into three subcolumns, The quantitative allowance of special tools for DS levels of maintenance will represent initial stockage for a 30-day period for the number of equipments supported. “Not applicable.”

h. One-Year Allowances Per 100 Equipment/Contingency Planning Purposes.

(1) Items authorized for use as required but not for initial stockage are identified with an asterisk in the allowance column.

(2) This column indicates the total quantity of special tools required for distribution and contingency y planning purposes. (When special tools are not required, enter statement “Not applicable.”)

i. Depot Maintenance Allowance Per Equipment.

(1) Items authorized for use as required but not for initial stockage are identified with an asterisk in the allowance column.

(2) This column indicates the total quantity of special tools authorized for depot maintenance of 100 equipments. (When special tools are not required, enter statement “Not applicable”.)

j. Illustration. This column is divided as follows:

(1) *Figure number.* Indicates the figure number of the illustration on which the item is shown.

(2) *Item number.* Indicates the callout number used to reference the item on the illustration.

4. Special Information

a. Refer to TM 10-8340-207-14 for repair parts on the tent, frame type, maintenance (FSN 8340-951-6419).

b. The basis of issue for authorized special tools, test and support equipment is the number of end items of equipment supported and the number of maintenance personnel allocated to perform the required maintenance operations.

c. Parts which require manufacture or assembly of a maintenance level higher than that authorized for installation will indicate in the source column the higher maintenance level.

d. Repair parts kits and gasket sets appear as the last entries in the repair parts listing for the group or assembly to which they apply.

e. The following publications pertain to the tentage equipment and its components:

TM 10-8340-203-13 Operator, organizational and Direct Support Maintenance Manual

5. How to Locate Repair Parts

a. When Federal stock number or reference number is unknown:

(1) *First.* Using the table of contents, determine the assembly group within which the repair part belongs. This is necessary since illustrations are prepared for assembly groups, and listings are divided into the same groups.

(2) *Second.* Find the illustration covering the assembly group to which the repair part belongs.

(3) *Third.* Identify the repair part on the illustration and note the illustration figure and item number of the repair part.

(4) *Fourth.* Using the Repair Parts Listing, find the assembly group to which the repair part belongs and locate the illustration figure and item number noted on the illustration.

b. When the Federal stock number or reference number is known:

(1) *First.* Using the Index of Federal Stock Numbers and Reference Numbers find the pertinent Federal stock number or reference number. This index is in ascending FSN sequence followed by a list of reference numbers in alphanumeric sequence, cross-referenced to the illustration figure number and item number.

(2) *Second.* Using the Repair Parts Listing, find the assembly group of the repair part and the illustration figure number and item number referenced in the Index of Federal Stock Number and Reference Numbers.

6. Abbreviations

cn _____ can
 dia _____ diameter
 ea _____ each
 gl _____ gallon
 hex _____ hexagon

in _____ inch (es)
 lg _____ long, length
 mft _____ mildew resistant thread
 No _____ number
 oz _____ ounce
 pk pkg _____ package
 ref _____ reference
 sh _____ sheet
 w _____ wide width
 w/ _____ with
 wo/ _____ without
 yd _____ yard

7. Recommendations for Maintenance Publications Improvements

You can improve this manual by calling attention to errors and by recommending improvements, using DA Form 2028 (Recommended Changes to Publications) or by a letter, and mailing directly to Commander, U.S. Army Troop Support Command, ATTN: AMSTS-MP, 4300 Goodfellow Boulevard St. Louis, Missouri 63120. A reply will be furnished directly to you.

| TM10-8340-203-23P (1) | (2) | (3) | (4) | (5) | (6) 15-DAY ORGANIZATIONAL MAINTENANCE ALW | | | | (7) ILLUS- TRATION | | |
|--------------------------|----------------------------|--|----------------------|--------------------|---|------------|-------------|--------------|--------------------------|------------------|-------------------|
| SMR CODE | FEDERAL STOCK NUMBER | DESCRIPTION REF NUMBER & MFR CODE | USABLE ON CODE | UNIT OF MEAS | QTY INC IN UNIT | (A) 1-5 | (B) 6-20 | (C) 21-50 | (D) 51-100 | (A) FIG NO | (B) ITEM NO |
| | | SECTION III - REPAIR PARTS LIST FOR ORGANIZATIONAL MAINTENANCE | | | | | | | | | |
| | | PART ONE - MISSILE MAINTENANCE TEST SHOP TENT | | | | | | | | | |
| | | GROUP 01 - TENT ANCHORING COMPONENTS | | | | | | | | | |
| PAOZZ | 8340-823-7451 | PIN, TENT, STEEL, 12 IN.LG, TYPE II, MIL SPEC P-501 | | EA | 16 | * | * | * | * | 1 | 1 |
| MFOZZ | | LINE, TENT: MANILLA, 3 STRANDS, 3/8 IN. DIA, MRT, GROUND ADJUSTING LINES | | EA | 11 | | | | | 1 | 2 |
| MFOZZ | | BRACKET: GROUND LINE ADJUSTING, 1 1/2 X 3 IN. | | EA | 11 | | | | | 1 | 3 |
| MFOZZ | | LINE, TENT: MANILA, 3 STRANDS, 1/4 IN. DIA, MRT, GROUND HEM STIFFENER AND HEATER DUCT SLEEVE | | EA | 3 | | | | | 1 | 4 |
| PAOZZ | 8340-252-2299 | LINE, TENT: COTTON, FOOTSTOP 1/4 IN. DIA, 19 IN.LG, TYPE I, CLASS C, MIL SPEC L-1709 | | EA | 16 | * | * | * | * | 1 | 5 |
| | | GROUP 02 - TENTAGE | | | | | | | | | |
| MFOZZ | | BODY, TENT MANUFACTURE FROM: | | EA | 1 | | | | | 1 | 6 |
| PAOZZ | 8305-261-8797 | CLOTH, COTTON, WIND RESISTANT, SATEEN, BASIC TENT FABRIC, OLIVE GREEN, ARMY SHADE NO. 107,35 IN. W, AS REQUIRED | | YD | | * | * | * | * | 1 | |
| MOOZZ | | THONG: SLIDE FASTENER MANUFACTURE FROM: | | EA | 6 | | | | | 1 | |
| PAOZZ | 8315-262-2785 | THREAD, POLYESTER, NATURAL, TICKET NO. F, AS REQUIRED | | SP | | * | * | * | * | 1 | |
| | | GROUP 03 - TENT SUPPORT COMPONENTS | | | | | | | | | |
| MFOZZ | | SUPPORT: END, DIAGONAL, 67 5/16 IN.LG | | EA | 2 | | | | | 2 | 1 |
| MFOZZ | | SUPPORT: TOP, END, 48 7/8 IN.LG | | EA | 2 | | | | | 2 | 2 |
| PAOZZ | 5670-989-2611 | ELBOW, RAILING: OUTER TOP SUPPORT, ALUMINUM, 1 1/4 IN., NO.3 3-1 (00403) | | EA | 2 | * | * | * | * | 2 | 3 |
| PAOZZ | 5305-724-6810 | SETSCREW: 3/8-16 X 3/8 IN.LG | | EA | 4 | * | * | * | * | 2 | 4 |
| PAOZZ | 5670-989-2612 | TEE, RAILING: OUTER TOP, SUPPORT TO END DIAGONAL SUPPORT, ALUMINUM, 1 1/4 IN., NO.5 5-1 (00403) | | EA | 2 | * | * | * | * | 2 | 5 |
| PAOZZ | 5305-724-6810 | SETSCREW: 3/8-16 X 3/8 IN.LG | | EA | 6 | * | * | * | * | 2 | 6 |
| MFOZZ | | SUPPORT: TOP, OUTER, 102 IN.LG | | EA | 1 | | | | | 2 | 7 |
| PAOZZ | 5670-989-2611 | ELBOW, RAILING: INNER TOP, SUPPORT, ALUMINUM, 1 1/4 IN., NO.3 3-1(00403) | | EA | 2 | * | * | * | * | 2 | 8 |
| PAOZZ | 5305-724-6810 | SETSCREW, 3/8-16 X 3/8 IN.LG | | EA | 4 | * | * | * | * | 29 | |
| PAOZZ | 8340-973-2268 | SUPPORT: TOP, INNER 5-4-664 TEM1-1 (81337) | | EA | 1 | * | * | * | * | 2 | 10 |
| MFOZZ | | SCREW, CAP, HEXAGON HEAD: STEEL, 1/4-28 X 2 1/8 IN. MODIFIED | | EA | 6 | | | | | 2 | 11 |
| PAOZZ | 5310-582-5677 | WASHER, FLAT: 1/4 IN. | | EA | 6 | * | * | * | * | 2 | 12 |

| TM10-8340-203-23P | | (3) | (4) | (5) | (6) | | | | (7) | | |
|-------------------|---------------|---|----------------|--------------|-----------------|---|-----|-----|-----|--------------------------|-------------|
| (1) | (2) | DESCRIPTION | USABLE ON CODE | UNIT OF MEAS | QTY INC IN UNIT | 15-DAY ORGANIZATIONAL MAINTENANCE ALW (A) | (B) | (C) | (D) | ILLUS-TRATION (A) FIG NO | (B) ITEM NO |
| | | REF NUMBER & MFR CODE | | | | | | | | | |
| | | PART TWO - PULSE ACQUISITION RADAR TENT, FRONT | | | | | | | | | |
| | | GROUP 01 - TENT ANCHORING COMPONENTS | | | | | | | | | |
| PAOZZ | 8340-205-2759 | SLIP, TENT LINE: FLAT MAGNESIUM, 4 IN. LG, MIL SPEC T-10035 | | EA | 7 | * | * | * | * | 3 | 1 |
| PAOZZ | 8340-823-7451 | PIN, TENT: STEEL, 12 IN. LG, TYPE II, MIL SPEC P-501 | | EA | 19 | * | * | * | * | 3 | 2 |
| MFOZZ | | LINE, TENT: MANILA, GUY LINE, 3 STRANDS, 3/8 IN. DIA, 12 FT LG | | EA | 7 | | | | | 3 | 3 |
| PAOZZ | 8340-252-2299 | LINE, TENT: COTTON FOOTSTOP, 1/4 IN. DIA, 19 IN. LG, TYPE I, CLASS C, MIL SPEC L-1709 | | EA | 12 | * | * | * | * | 3 | 4 |
| MFOZZ | | LINE, TENT: MANILA, 3 STRANDS, 3/8 IN. DIA, MRT, GROUND ADJUSTING LINES | | EA | 12 | | | | | 3 | 5 |
| MFOZZ | | BRACKET: GROUND LINE ADJUSTING, 1 1/2 X 3 IN. | | EA | 12 | | | | | 3 | 6 |
| MFOZZ | | LINE, TENT: MANILA, 3 STRANDS, 1/4 IN. DIA, MRT, GROUND HEM STIFFENER, HEATER DUCT SLEEVE, AND TRAILER JACK SLEEVE | | EA | 6 | | | | | 3 | 7 |
| | | GROUP 02 - TENTAGE | | | | | | | | | |
| MFOZZ | | BODY, TENT MANUFACTURE FROM: | | EA | 1 | | | | | 3 | 8 |
| PAOZZ | 8305-261-8797 | CLOTH, COTTON, WIND RESISTANT, SATEN, BASIC TENT FABRIC, OLIVE GREEN, ARMY SHADE NO. 107, 35 IN. W, AS REQUIRED | | YD | | * | * | * | * | 3 | |
| PAOZZ | 5325-231-6622 | GROMMET, METALLIC, BRASS, BLACK CHEMICAL FINISH, NO. 4, FOOTSTOP, FRONT WALL, GROMMET TAB, AND GUY LINE, 81 EA REQUIRED 8460200 (00000) | | EA | | * | * | * | * | 3 | |
| PAOZZ | 5325-025-3038 | SOCKET, TURNBUTTON FASTENER, FRONT WALL, SIDE WALL, LEFT AND RIGHT, 27 EA REQUIRED BS78403 (61864) | | EA | | * | * | * | * | 3 | |
| MOOZZ | | THONG: SLIDE FASTENER MANUFACTURE FROM: | | EA | 10 | | | | | 3 | |
| PAOZZ | 8315-262-2785 | BRAID, AS REQUIRED | | YD | | * | * | * | * | 3 | |
| | | GROUP 03 - TENT SUPPORT COMPONENTS | | | | | | | | | |
| MFOFZ | | SUPPORT: LUNETTE W/ROD, 60 IN. LG | | EA | 1 | | | | | 4 | 1 |
| PAOZZ | 5670-989-2611 | ELBOW, RAILING: TOP OUTER SUPPORT TO SIDE DIAGONAL SUPPORT, ALUMINUM, 1 1/4 IN., NO. 3 3-1 (00403) | | EA | 2 | * | * | * | * | 4 | 2 |
| PAOZZ | 5305-724-6810 | SETSCREW: 3/8-16 X 3/8 IN. LG | | EA | 4 | * | * | * | * | 4 | 3 |
| MFOZZ | | SUPPORT: TOP, OUTER, 92 IN. LG | | EA | 1 | | | | | 4 | 4 |
| PAOZZ | 5670-989-2612 | TEE, RAILING: OUTER TOP SUPPORT TO LUNETTE SUPPORT, ALUMINUM, 1 1/4 IN., NO. 5 5-1 (00403) | | EA | 1 | * | * | * | * | 4 | 5 |
| PAOZZ | 5305-724-6810 | SETSCREW: 3/8-16 X 3/8 IN., LG | | EA | 3 | * | * | * | * | 4 | 6 |

| TM10-8340-203-23P | | (3) DESCRIPTION | (4) USABLE ON CODE | (5) UNIT OF MEAS | (6) QTY INC IN UNIT | (6) 15-DAY ORGANIZATIONAL MAINTENANCE ALW | | | | (7) ILLUS- TRATION | |
|--------------------|-----------------------------------|--|-----------------------------|---------------------------|---------------------------------|---|-----|-----|-----|--------------------------|------------------|
| (1) SMR CODE | (2) FEDERAL STOCK NUMBER | | | | | REF NUMBER & MFR CODE | (A) | (B) | (C) | (D) | (A) FIG NO |
| MFOZZ | | SUPPORT: SIDE DIAGONAL, 75 1/4 IN.LG | | EA | 2 | | | | | 4 | 7 |
| PAOZZ | 8340-973-2270 | SUPPORT: TOP, INNER S-4-6001TEM2-1 (81337) | | EA | 1 | * | * | * | * | 4 | 8 |
| MFOZZ | | SCREW, CAP, HEXAGON HEAD: 1/2-13 X 3 IN., MODIFIED | | EA | 2 | | | | | 4 | 9 |
| PAOZZ | 5310-767-9425 | WASHER, FLAT: 1/2 IN. | | EA | 2 | * | * | * | * | 4 | 10 |
| | | PART THREE - PULSE ACQUISITION RADAR TENT, AFT | | | | | | | | | |
| | | GROUP 01 - TENT ANCHORING COMPONENTS | | | | | | | | | |
| PAOZZ | 8340-823-7451 | PIN, TENT: STEEL, 12 IN. LG,TYPE II, MIL SPEC P-501 | | EA | 12 | * | * | * | * | 5 | 1 |
| MFOZZ | | LINE, TENT: MANILA, 3 STRANDS, 3/8 IN. DIA, MRT GROUND ADJUSTING LINES | | EA | 12 | | | | | 5 | 2 |
| MFOZZ | | BRACKET: GROUND LINE ADJUSTING, 1 1/2 X 3 IN. | | EA | 12 | | | | | 5 | 3 |
| PAOZZ | 8340-252-2299 | LINE, TENT: COTTON, FOOTSTOP, 1/4 IN. DIA, 19 IN. LG, TYPE 1, CLASS C, MIL SPEC L-1709 | | EA | 12 | * | * | * | * | 5 | 4 |
| MFOZZ | | LINE, TENT: MANILA, 3 STRANDS, 1/4 IN. DIA, MRT, GROUND HEM STIFFENER, HEATER DUCT SLEEVE, AND TRAILER JACK SLEEVE | | EA | 5 | | | | | 5 | 5 |
| | | GROUP 02 - TENTAGE | | | | | | | | | |
| MFOFZ | | BODY, TENT MANUFACTURE FROM: | | EA | 1 | | | | | 5 | 6 |
| PAOZZ | 8305-261-8797 | CLOTH, COTTON, WIND RESISTANT SATEEN, BASIC TENT FABRIC, OLIVE GREEN, ARMY SHADE NO. 107, 35 IN. W. AS REQUIRED | | YD | | * | * | * | * | 5 | |
| PAOZZ | 5325-231-6622 | GROMMET, METALLIC, BRASS, BLACK CHEMICAL FINISH, NO. 4, FOOTSTOP, FRONT WALL AND GROMMET TAB, 62 EA REQUIRED 8460200 (00000) | | EA | | * | * | * | * | 5 | |
| PAOZZ | 5325-025-3038 | SOCKET, TURNBUTTON FASTENER, FRONT WALL, SIDE WALL, LEFT AND RIGHT, 27 EA REQUIRED BS78403 (61864) | | EA | | * | * | * | * | 5 | |
| MOOZZ | | THONG: SLIDE FASTENER MANUFACTURE FROM: | | EA | 6 | | | | | 5 | |
| PAOZZ | 8315-262-2785 | BRAID, AS REQUIRED | | YD | | * | * | * | * | 5 | |
| | | GROUP 03 - TENT SUPPORT COMPONENTS | | | | | | | | | |
| PAOZZ | 5670-989-2611 | ELBOW, RAILING: TOP OUTER SUPPORT TO SIDE DIAGONAL SUPPORT, ALUMINUM, 1 1/4 IN., NO.3 3-1 (00403) | | EA | 2 | * | * | * | * | 6 | 1 |
| PAOZZ | 5305-989-5843 | SETSCREW: 3/8-16 X 3/8 IN. LG | | EA | 4 | * | * | * | * | 6 | 2 |
| MFOZZ | | SUPPORT: TOP, OUTER, 92 IN.LG | | EA | 1 | | | | | 6 | 3 |
| MFOZZ | | SUPPORT: SIDE DIAGONAL, 54 7/8 IN. LG | | EA | 2 | | | | | 6 | 4 |
| PAOZZ | 8340-973-2270 | SUPPORT: TOP, INNER S-4-6601TEM2-1 (81337) | | EA | 1 | * | * | * | * | 6 | 5 |

| TM10-8340-203-23P | | (3) DESCRIPTION REF NUMBER & MFR CODE | (4) USABLE ON CODE | (5) UNIT OF MEAS | (6) QTY INC IN UNIT | (6) 15-DAY ORGANIZATIONAL MAINTENANCE ALW | | | | (7) ILLUS- TRATION | |
|--------------------|-----------------------------------|--|-----------------------------|---------------------------|---------------------------------|---|-----|-----|-----|--------------------------|-------------------|
| (1) SMR CODE | (2) FEDERAL STOCK NUMBER | | | | | (A) | (B) | (C) | (D) | (A) FIG NO | (B) ITEM NO |
| MFOZZ | | SCREW, CAP, HEXAGON HEAD: 1/2-13 X 2 IN., MODIFIED | | EA | 2 | | | | | 6 | 6 |
| PAOZZ | 5310-767-9425 | WASHER, FLAT: 1/2 IN. PART FOUR - RANGE ONLY RADAR, CW ACQUISITION RADAR, AND CW ILLUMINATOR RADAR TENT GROUP 01 - TENT ANCHORING COMPONENTS | | EA | 2 | * | * | * | * | 6 | 7 |
| PAOZZ | 8340-823-7451 | PIN, TENT: STEEL, 12 IN.LG, TYPE II, MIL SPEC P-501 | | EA | 18 | * | * | * | * | 7 | 1 |
| PAOZZ | 8340-205-2759 | SLIP, TENT LINE: FLAT MAGNESIUM, 4 IN.LG, MIL SPEC T-10035 | | EA | 4 | * | * | * | * | 7 | 2 |
| MFOZZ | | LINE TENT: MANILA, 3 STRANDS, 1/4 IN. DIA, MRT, BLACKOUT HEM STIFFENER, GROUND ADJUSTING LINES, GUY LINE AND HEATER DUCT SLEEVE | | EA | 23 | | | | | 7 | 3 |
| MFOZZ | | BRACKET: GROUND LINE ADJUSTING, 1 1/2 IN. X 3 IN. | | EA | 14 | | | | | 7 | 4 |
| PAOZZ | 8340-252-2299 | LINE, TENT: COTTON FOOTSTOP, 1/4 IN. DIA, 19 IN. LG, TYPE I, CLASS C, MIL SPEC L-1709 GROUP 02 - TENTAGE | | EA | 14 | * | * | * | * | 7 | 5 |
| MFOFZ | | BODY,TENT MANUFACTURE FROM: | | EA | 1 | | | | | 7 | 6 |
| PAOZZ | 8305-261-8797 | CLOTH, COTTON, WIND RESISTANT, SATEEN, BASIC TENT FABRIC, OLIVE GREEN, ARMY SHADE NO. 107, 35 IN. W, AS REQUIRED | | YD | | * | * | * | * | 7 | |
| PAOZZ | 5325-231-6622 | GROMMET, METALLIC, BRASS, BLACK CHEMICAL FINISH, NO 4, FOOTSTOP, GROMMET TAB, AND GUY LINE, 90 EA REQUIRED 8460200 (00000) | | EA | | * | * | * | * | 7 | |
| PAOZZ | 5325-025-3038 | SOCKET, TURNBUTTON FASTENER, FRONT WALL, SIDE WALL, LEFT AND RIGHT, 27 EA REQUIRED BX78403 (61864) | | EA | | * | * | * | * | 7 | |
| MOOZZ | | THONG: SLIDE FASTENER MANUFACTURE FROM: | | EA | 10 | | | | | 7 | |
| PAOZZ | 8315-262-2784 | BRAID, AS REQUIRED GROUP 03 - TENT SUPPORT COMPONENTS | | YD | | * | * | * | * | 7 | |
| PAOZZ | 8340-973-2269 | SUPPORT: LUNETTE 5-4-7181TEM1-4 (81337) | | EA | 1 | * | * | * | * | 8 | 1 |
| PAOZZ | 5310-903-5966 | NUT, PLAIN, HEXAGON: LUNETTE SUPPORT, 1/4-20 THD SIZE | | EA | 2 | * | * | * | * | 8 | 2 |
| PAOZZ | 5310-042-6758 | WASHER, LOCK: LUNETTE SUPPORT, 1/4 IN. | | EA | 2 | * | * | * | * | 8 | 3 |
| PAOZZ | 5305-207-8253 | SCREW, CAP, HEXAGON HEAD: LUNETTE SUPPORT, 1/4-20 X 1 IN.LG | | EA | 2 | * | * | * | * | 8 | 4 |
| PAOZZ | 5310-582-5677 | WASHER, FLAT: LUNETTE SUPPORT, 1/4 IN. | | EA | 2 | * | * | * | * | 8 | 5 |
| PAOZZ | 5670-989-2611 | ELBOW, RAILING: OUTER TOP SUPPORT, ALUMINUM, 1 1/4 IN., NO. 3 3-1 (00403) | | EA | 4 | * | * | * | * | 8 | 6 |

| TM10-8340-203-23P (1) | (2) | (3) | (4) | (5) | (6) | 15-DAY ORGANIZATIONAL MAINTENANCE ALW | | | | (7) | (8) |
|--------------------------|----------------------------|--|----------------------|--------------------|--------------------------|--|-----|-----|-----|------------------|-------------------|
| SMR CODE | FEDERAL STOCK NUMBER | DESCRIPTION REF NUMBER & MFR CODE | USABLE ON CODE | UNIT OF MEAS | QTY INC IN UNIT | (A) | (B) | (C) | (D) | (A) FIG NO | (B) ITEM NO |
| PAOZZ | 5305-984-5689 | SCREW, MACHINE: SUPPORT TO ELBOWS, 3/8-16 X 3/4 IN. LG | | EA | 4 | * | * | * | * | 8 | 7 |
| PAOZZ | 5670-989-2612 | TEE, RAILING: OUTER TOP SUPPORT TO LUNETTE SUPPORT, ALUMINUM, 1 1/4 IN., NO. 5 5-1 (00403) | | EA | 1 | * | * | * | * | 8 | 8 |
| PAOZZ | 5305-984-5687 | SCREW, MACHINE: LUNETTE SUPPORT TO TEE, 3/8-16 X 1/2 IN.LG | | EA | 3 | * | * | * | * | 8 | 9 |
| MFOZZ | | SUPPORT: TOP, OUTER, 92 IN. LG | | EA | 1 | | | | | 8 | 10 |
| PAOZZ | 5670-989-2611 | ELBOE, RAILING: INNER TOP SUPPORT, ALUMINUM, 1 1/4 IN., NO.3 3-1 (00403) | | EA | 2 | * | * | * | * | 8 | 11 |
| PAOZZ | 5305-984-5687 | SCREW, MACHINE: INNER TOP SUPPORT TO ELBOWS, 3/8-16 X 1/2 IN. LG | | EA | 2 | * | * | * | * | 8 | 12 |
| PAOZZ | 5305-984-5689 | SCREW, MACHINE: SIDE TOP SUPPORTS TO ELBOW 3/8-16 X 3/4 IN.LG | | EA | 2 | * | * | * | * | 8 | 13 |
| MFOZZ | | SUPPORT: TOP, SIDE, 78 3/8 IN.LG | | EA | 2 | | | | | 8 | 14 |
| PAOZZ | 8340-973-2271 | SUPPORT: TOP, INNER 5-4-7181TEMI (81337) | | EA | 1 | * | * | * | * | 8 | 15 |
| MFOZZ | | SCREW, CAP, HEXAGON: INNER, 1/4-28 X 3/4 IN. LG, MODIFIED | | EA | 2 | | | | | 8 | 16 |
| PAOZZ | 5340-828-4765 | RING, RETAINING: STEEL, TYPE E MS16633-4021 (96906) | | EA | 2 | * | * | * | * | 8 | 17 |
| MFOZZ | | SCREW, CAP, HEXAGON HEAD: OUTER, 1/4-28 X 2 1/8 IN.LG, MODIFIED | | EA | 4 | | | | | 8 | 18 |
| PAOZZ | 5310-582-5677 | WASHER, FLAT: 1/4 IN. PART FIVE - HIGH POWER ILLUMINATOR TENT, FRONT GROUP 01 - TENT ANCHORING COMPONENTS | | EA | 6 | * | * | * | * | 8 | 19 |
| PAOFF | 8340-119-1257 | TENT, CONSOLE, HIGH POWER ILLUMINATOR, FRONT ASSEMBLY 5-4-1116-11 (81337) | | EA | 1 | * | * | * | * | 9 | |
| PAOZZ | 8340-205-2759 | SLIP, LINE TENT 5-4-1116-11 (81337) | | EA | 5 | * | * | * | * | 9 | 1 |
| PAOZZ | 8340-252-2273 | LINE, GUY 5-4-1116-10 (81337) | | EA | 6 | * | * | * | * | 9 | 2 |
| PAOZZ | 8340-823-7451 | PIN, TENT, STEEL: 12 IN. | | EA | 16 | * | * | * | * | 9 | 4 |
| PAOZZ | 8340-261-9750 | PIN, TENT, WOOD: 16IN. GROUP 02 - TENTAGE | | EA | 16 | * | * | * | * | 9 | 5 |
| MFOZZ | | BODY, TENT MANUFACTURE FROM: | | EA | 1 | | | | | 9 | 6 |
| PAOZZ | 5325-641-0295 | GROMMET, METALLIC, NO. 4, AS REQUIRED GROUP 03 - TENT SUPPORT COMPONENTS | | EA | | * | * | * | * | 9 | |
| PAOZZ | 8340-121-1318 | FRAME, TENT: HIGH POWER ILLUMINATOR, FRONT ASSEMBLY 5-4-1103-2 (81337) | | EA | 1 | * | * | * | * | 10 | |
| MFOZZ | | CORD, SOLID, BRAID 5-4-1103-5 (81337) | | EA | V | | | | | 10 | 1 |

| TM10-8340-203-23P | | (3) | (4) | (5) | (6) | | | | (7) | | |
|-------------------|----------------------|--|----------------|--------------|---------------------------------------|-----|-----|-----|---------------|------------|-------------|
| (1) | (2) | | | | 15-DAY ORGANIZATIONAL MAINTENANCE ALW | | | | ILLUS-TRATION | | |
| SMR CODE | FEDERAL STOCK NUMBER | DESCRIPTION | USABLE ON CODE | UNIT OF MEAS | QTY INC IN UNIT | (A) | (B) | (C) | (D) | (A) FIG NO | (B) ITEM NO |
| PAOZZ | 8340-459-0513 | PIN: 3/8 IN. DIA, 3 IN. LG 5-4-1105-3-5 (81337) | | EA | 4 | * | * | * | * | 10 | 2 |
| PAOZZ | 8340-459-0509 | CORNER SUPPORT ASSEMBLY 5-4-1103-2-1 (81337) | | EA | 2 | * | * | * | * | 10 | 3 |
| PAOZZ | 5305-088-8923 | SCREW, MACHINE: TRUSS HEADED, SLOTTED, 1/4-28 X 1 1/2 IN. LG 5-4-1103-2-16 (81337) | | EA | 11 | * | * | * | * | 10 | 4 |
| PAOZZ | 8340-459-0538 | SUPPORT, TOP, OUTER: 1 3/4 IN. OD, 1/8 IN. WALL 5-4-1103-2-9 (81337) | | EA | 1 | * | * | * | * | 10 | 5 |
| PAOZZ | 8340-459-0498 | SUPPORT, TOP, SIDE: 1 3/4 IN. OD, 1/8 IN. WALL 5-4-1103-2-10 (81337) | | EA | 2 | * | * | * | * | 10 | 6 |
| PAOZZ | 8340-459-0497 | SUPPORT, TOP, INNER: 1 1/4 SQ BAR 5-4-1103-2-8 (81337) | | EA | 1 | * | * | * | * | 10 | 7 |
| | | GROUP 04 - TENT ACCESSORIES | | | | | | | | | |
| XBOFF | | CARRYING CASE ASSEMBLY 5-4-1126-14 (81337) | | EA | 1 | | | | | 11 | |
| | | | | EA | 1 | | | | | 11 | |
| PAOZZ | 5340-878-7029 | CLIP, END: 1 IN., BALL TYPE | | EA | 5 | * | * | * | * | 11 | 2 |
| | | PART SIX - HIGH POWER ILLUMINATOR TENT, AFT | | | | | | | | | |
| | | GROUP 01 - TENT ANCHORING COMPONENTS | | | | | | | | | |
| PAOFF | 8340-119-1258 | TENT, HIGH POWER ILLUMINATOR, AFT ASSEMBLY 5-4-1129-1 (81337) | | EA | 1 | * | * | * | * | 12 | |
| PAOZZ | 8340-205-2759 | SLIP, LINE TENT | | EA | 5 | * | * | * | * | 12 | 1 |
| PAOZZ | 8340-823-7451 | PIN, TENT STEEL: 12 IN. | | EA | 16 | * | * | * | * | 12 | 2 |
| PAOZZ | 8340-261-9750 | PIN, TENT, WOOD: 16 IN. | | EA | 16 | * | * | * | * | 12 | 3 |
| PAOZZ | 8340-252-2273 | LINE, GUY 5-4-1129-10 (81337) | | EA | 5 | * | * | * | * | 12 | 4 |
| | | | | EA | 5 | | | | | 12 | 4 |
| | | GROUP 02 - TENTAGE | | | | | | | | | |
| MFOFZ | | BODY, TENT MANUFACTURE FROM: | | EA | 1 | | | | | 12 | 5 |
| PAOZZ | 5325-641-0295 | GROMMET, METALLIC, NO. 4, AS REQUIRED | | EA | | * | * | * | * | 12 | |
| | | GROUP 03 - TENT SUPPORT COMPONENTS | | | | | | | | | |
| PAOZZ | 8340-121-1320 | FRAME, TENT, HIGH POWER ILLUMINATOR, AFT 5-4-103-3 (81337) | | EA | 1 | * | * | * | * | 13 | |
| PAOZZ | 8340-459-0513 | PIN: 3/8 IN. DIA . 3 IN. LG 5-4-1105-3-5 (81337) | | EA | 2 | * | * | * | * | 13 | 1 |
| PAOZZ | 5310-989-5945 | NUT, HEXAGON: ADAPTER TO TRAILER MTG, 1/2-13 THD SIZE | | EA | 2 | * | * | * | * | 13 | 3 |
| PAOZZ | 5310-595-6179 | WASHER, LOCK: ADAPTER TO TRAILER | | EA | 2 | * | * | * | * | 13 | 4 |
| PAOZZ | 5305-021-3836 | SCREW, CAP, HEXAGON HEAD: ADAAPER TO TRAILER MTG, 1/2-13 X 3 1/2 IN. LG | | EA | 2 | * | * | * | * | 13 | 5 |

| TM10-8340-203-23P | | | | | | | | | | | |
|-------------------|----------------------|---|----------------|--------------|-----------------|---|-----|-----|-----|------------|-------------|
| (1) | (2) | (3) | | (4) | (5) | (6) | (7) | | | | (8) |
| SMR CODE | FEDERAL STOCK NUMBER | DESCRIPTION | USABLE ON CODE | UNIT OF MEAS | QTY INC IN UNIT | 15-DAY ORGANIZATIONAL MAINTENANCE ALW (A) | (B) | (C) | (D) | (A) FIG NO | (B) ITEM NO |
| PAOZZ | 8340-459-0513 | PALLET ADAPTER ASSEMBLY 5-4-1103-3-1 (81337) | | EA | 2 | * | * | * | * | 13 | 6 |
| PAOZZ | 8340-459-0515 | SUPPORT, TOP, OUTER: 1 3/4 IN. OD, 1/8 IN. WALL 5-4-1103-7 (81337) | | EA | 1 | * | * | * | * | 13 | 7 |
| PAOZZ | 8340-459-0487 | SUPPORT, TOP, SIDE: 1 3/4 IN. OD, 1/8 IN. WALL 5-4-1103-3-8 (81337) | | EA | 2 | * | * | * | * | 13 | 8 |
| PAOZZ | 5305-088-8923 | SCREW, MACHINE: TRUSS HEAD, SLOTTED, 1/4-28 X 1 1/2 IN. LG | | EA | 5 | * | * | * | * | 13 | 9 |
| PAOZZ | 8340-459-0514 | SUPPORT, TOP, INNER: 1 1/4 SQ BAR 5-4-11030306 (81337) | | EA | 1 | * | * | * | * | 13 | 10 |
| | | GROUP 04 - TENT ACCESSORIES | | | | | | | | | |
| XBOFF | | CARRYING CASE ASSEMBLY 5-4-1126-14 (81337) | | EA | 1 | | | | | 14 | |
| PAOZZ | 8340-078-7029 | CLIP END: 1 IN., BALL TYPE PART SEVEN - HAWK MISSILE COVER GROUP 05 - COVER | | EA | 5 | * | * | * | * | 14 | 2 |
| MFOZZ | | CHAPE: COTTON, DEE RING, 1 IN. W, WING SECTION SLIDE FASTENER FLAP TIE BACK, AND WING SECTION TIE DOWN | | EA | 5 | | | | | 15 | 2 |
| PAOZZ | 8340-996-4012 | STRAP, RUBBER, TARPAULIN: WING SECTION TIE DOWN, 15 IN. LG | | EA | 2 | * | * | * | * | 16 | 8 |
| PAOZZ | 8340-996-4009 | HOOK, S AND Z: STAINLESS STEEL, TIE DOWN STRAP TO WING SECTION DEE RING | | EA | 1 | * | * | * | * | 16 | 9 |
| PAOZZ | 8340-953-9136 | HOOK, S AND Z: STAINLESS STEEL, TIE BACK TAPE, WING SECTION SLIDE FASTENER FLAP, TOP AND BOTTOM, TIE DOWN STRAP TO THRUST END SECTION DEE RING | | EA | 7 | * | * | * | * | 17 | 4 |
| PAOZZ | 8340-996-4009 | HOOK, S AND Z: STAINLESS STEEL, SLIDE FASTENER THONG, AND THE DOWN STRAP TO THRUST END SECTION DEE RING | | EA | 3 | * | * | * | * | 17 | 5 |
| PAOFZ | 8340-953-9138 | STRAP, RUBBER, TARPAULIN: WING SECTION TIE DOWN, 20 IN. LG | | EA | 5 | * | * | * | * | 17 | 7 |
| PAOZZ | 5325-639-8109 | GROMMET, METALLIC: BRASS, BLACK CHEMICAL FINISH, NO. 1, TYPE III, CLASS 3, MIL SPEC G-16491, INTERMEDIATE SECTION DRAIN, THRUST END SECTION DRAIN | | EA | 7 | * | * | * | * | | |
| PAOZZ | 8340-953-9137 | HOOK Z: SLEEVE STRAP TO TIE DOWN STRAP, STAINLESS STEEL, 3/16 IN. DIA X 2 IN. LG | | EA | 5 | * | * | * | * | | |
| PAOZZ | 5340-264-1221 | RING, CONNECTION, ROUND: SLIDE FASTENER THONG, MALLEABLE IRON, GALVANIZED, TYPE I, CLASS A, 1/2 IN., MIL SPEC R-1482 | | EA | 1 | * | * | * | * | | |
| PAOZZ | 8340-973-4430 | REPAIR KIT, HAWK MISSILE COVER 5-SCOURING 12-ADHESIVE 2-BRUSH 2-CLOTH 1-ROLLER 1-SHEARS 1-TOLVENE | | EA | V | * | * | * | * | | |

| SMR CODE | FEDERAL STOCK NUMBER | DESCRIPTION REF NUMBER & MFR CODE | USABLE ON CODE | UNIT OF MEAS | QTY INC IN UNIT | (6) 30-DAY DS MAINT ALLOWANCE | | | (7) 30-DAY GS MAINT ALLOWANCE | | | (8) 1-YR ALW PER 100 EQUIP CNTGY | (9) DEPOT MAINT ALW PER 100 EQUIP | (10) ILLUS-TRATION | |
|----------|----------------------|---|----------------|--------------|-----------------|-------------------------------|-------|--------|-------------------------------|-------|--------|----------------------------------|-----------------------------------|--------------------|---------|
| | | | | | | (A) | (B) | (C) | (A) | (B) | (C) | | | (A) | (B) |
| | | SECTION V - REPAIR PARTS LIST FOR DIRECT SUPPORT MAINTENANCE | | | | 1-20 | 21-50 | 51-100 | 1-20 | 21-50 | 51-100 | | | FIG NO | ITEM NO |
| | | PART ONE - MISSILE MAINTENANCE TEST SHOP TENT | | | | | | | | | | | | | |
| | | GROUP 01 - TENT ANCHORING COMPONENTS | | | | | | | | | | | | | |
| PAOZZ | 8340-823-7451 | PIN, TENT: STEEL, 12 IN. LG, TYPE II, MIL SPEC F-501 | | EA | 16 | * | * | * | | | * | * | | 1 | 1 |
| MFOZZ | | LINE, TENT: MANILLA, 3 STRANDS, 3/8 IN. DIA, MRT, GROUND ADJUSTING LINES MANUFACTURE FROM: | | EA | 11 | | | | | | | | | 1 | 2 |
| PAFZZ | 4020-231-9021 | ROPE, AS REQUIRED | | FT | | * | * | * | | | | | | | 1 |
| MFOZZ | | BRACKET: GROUND LINE ADJUSTING, 1 1/2 X 3 IN. MANUFACTURE FROM: | | EA | 11 | | | | | | | | | 1 | 3 |
| PAFZZ | 5530-262-8180 | PLYWOOD, AS REQUIRED 5-4-713 (81337) | | SH | | * | * | * | | | | | | | 1 |
| MFOZZ | | LINE, TENT: MANILLA, 3 STRANDS, 1/4 IN. DIA, MRT, GROUND HEM STIFFENER AND HEATER DUCT SLEEVE MANUFACTURE FROM: | | EA | 3 | | | | | | | | | 1 | 4 |
| PAFZZ | 4020-231-9021 | ROPE, AS REQUIRED | | FT | | * | * | * | | | | | | | 1 |
| PAOZZ | 8340-252-2299 | LINE, TENT: COTTON, FOOTSTOP, 1/4 IN. DIA, 19 IN. LG, TYPE 1, CLASS C, MIL SPEC L-1709 GROUP 02 - TENTAGE | | EA | 16 | * | * | * | | | * | * | | 1 | 5 |
| MFOZZ | | BODY, TENT MANUFACTURE FROM: | | EA | 1 | | | | | | | | | 1 | 6 |
| PAOZZ | 8305-261-8797 | CLOTH, COTTON, WIND RESISTANT, SATEN, BASIC TENT FABRIC, OLIV GREEN, ARMY SHADE NO. 107, 35 IN. W, AS REQUIRED | | YD | | * | * | * | | | | | | | 1 |
| PAFZZ | 8305-890-1569 | CLOTH, POLYESTER FIBER, NATURAL, LIGHT PORT, 5.5 OZ, AS REQUIRED | | YD | | * | * | * | | | | | | | 1 |
| PAFZZ | 5325-174-9057 | FASTENER, SLIDE, INTERLOCKING, LIGHT PORT, 48 IN. LG, TYPE III, STYLE 1, SIZE H, FED SPEC V-F-00106, 2 EA REQUIRED 538220 (00000) | | EA | | * | * | * | | | | | | | 1 |
| PAFZZ | 5325-174-9014 | FASTENER, SLIDE, INTERLOCKING PERSONNEL DOOR, 80 IN. LG, TYPE III, STYLE 1, SIZE H, FED SPEC V-F-00106, 1 EA REQUIRED 538229 (00000) | | EA | | * | * | * | | | | | | | 1 |
| PAFZZ | 5325-292-5340 | FASTENER, SNAP, TIE DOWN STRAP, BRASS, BRONZE PLATED FINISH, 500 PER PKG, AS REQUIRED | | PK | | * | * | * | | | | | | | 1 |
| PAFZZ | 5235-290-5933 | FASTENER, SNAP, TIE DOWN STRAP, BRASS, BRONZE FINISH, 9 EA REQUIRED AN227-8B9B (88044) | | EA | | * | * | * | | | | | | | 1 |
| PAFZZ | 5235-231-6622 | GROMMET, METALLIC, BRASS BLACK CHEMICAL FINISH, NO. 4, FOOTSTEP GROMMET TAB, 72 EA REQUIRED 8460200 (00000) | | EA | | * | * | * | | | | | | | 1 |
| PAFZZ | 5325-072-5271 | GROMMET, METALLIC, TENT ROOF, BRASS, OBLONG, 6 EA REQUIRED AB67WITHWASHER (57771) | | EA | | * | * | * | | | | | | | 1 |

TM10-8340-203-23P
(1) (2)

(3)

(4)

(5)

(6)
30-DAY DS MAINT
ALLOWANCE

(7)
30-DAY GS MAINT
ALLOWANCE

(8)
1-YR
ALW

(9)
DEPOT
MAINT
ALW

(10)
ILLUS-
TRATION
(A) (B)

| SMR CODE | FEDERAL STOCK NUMBER | DESCRIPTION REF NUMBER & MFR CODE | USABLE ON CODE | UNIT OF MEAS | QTY INC IN UNIT | (6) | | | (7) | | | (8) | (9) | (10) | | |
|-------------|----------------------------|---|----------------------|--------------------|--------------------------|-----|-----|-----|-----|-----|-----|----------------|---------------------|-----------|------------|----|
| | | | | | | (A) | (B) | (C) | (A) | (B) | (C) | EQUIP CWTGY | 100 PER EQUIP | FIG NO | ITEM NO | |
| PAFZZ | 5325-025-3038 | SOCKET, TURNBUTON FASTENER, FRONT WALL, SIDE WALL, LEFT AND RIGHT, 39 EA REQUIRED BS78403 (61864) | | EA | | * | * | * | | | | | | | 1 | |
| MOOZZ | | THONG; SLIDE FASTENER MANUFACTURE FROM: | | EA | 6 | | | | | | | | | | 1 | |
| PAOZZ | 8315-262-2785 | THREAD, POLYESTER, NATURAL, TICKET NO. F, AS REQUIRED GROUP 03 - TENT SUPPORT COMPONENTS | | SP | | * | * | * | | | | | | | 1 | |
| MFOZZ | | SUPPORT: END, DIAGONAL, 67 5/16 IN. LG MANUFACTURE FROM: | | EA | 2 | | | | | | | | | | 2 | 1 |
| PAFZZ | 4710-542-2906 | PIPE, AS REQUIRED 5-4-664-1-4 (81337) | | FT | | * | * | * | | | | | | | 2 | |
| MFOZZ | | SUPPORT: TOP, END, 48 7/8 IN. LG MANUFACTURE FROM: | | EA | 2 | | | | | | | | | | 2 | 2 |
| PAFZZ | 4710-542-2906 | PIPE, AS REQUIRED 5-4-664-1-3 (81337) | | FT | | * | * | * | | | | | | | 2 | |
| PAOZZ | 5670-989-2611 | ELBOW, RAILING: OUTER TOP SUPPORT, ALUMINUM, 1 1/4 IN., NO. 3 3-1 (00403) | | EA | 2 | * | * | * | | * | * | | | | 2 | 3 |
| PAOZZ | 5305-724-6810 | SECTSCREW: 3/8-16 X 3/8 IN. LG | | EA | 4 | * | * | * | | * | * | | | | 2 | 4 |
| PAOZZ | 5670-989-2612 | TEE, RAILING: OUTER TOP, SUPPORT TO END DIAGONAL SUPPORT, ALUMINUM, 1 1/4 IN., NO. 5 5-1 (00403) | | EA | 2 | * | * | * | | * | * | | | | 2 | 5 |
| PAOZZ | 5305-724-6810 | SETScrew: 3/8-16 X 3/8 IN. LG | | EA | 6 | * | * | * | | * | * | | | | 2 | 6 |
| MFOZZ | | SUPPORT: TOP, OUTER, 102 IN. LG MANUFACTURE FROM: | | EA | 1 | | | | | | | | | | 2 | 7 |
| PAFZZ | 4710-542-2906 | PIPE, AS REQUIRED 5-4-664-1-2 (81337) | | FT | | * | * | * | | | | | | | 2 | |
| PAOZZ | 5670-989-2611 | ELBOW, RAILING: INNER TOP SUPPORT, ALUMINUM, 1 1/4 IN., NO.3 3-1 (00403) | | EA | 2 | * | * | * | | * | * | | | | 2 | 8 |
| PAOZZ | 5305-724-6810 | SECTSCREW: 3/8-16 X 3/8 IN. LG | | EA | 4 | * | * | * | | * | * | | | | 2 | 9 |
| PAOZZ | 8340-973-2268 | SUPPORT: TOP, INNER 5-4-664ITEM1 (81337) | | EA | 1 | * | * | * | | * | * | | | | 2 | 10 |
| MFOZZ | | SCREW, CAP, HEXAGON HEAD: STEEL, 1/4-28 X 2 1/8 IN. MODIFIED MANUFACTURE FROM: | | EA | 6 | | | | | | | | | | 2 | 11 |
| PAFZZ | 5305-267-8982 | SCREW, 6 EA REQUIRED 5-4-664-1-7 (81337) | | EA | | * | * | * | | | | | | | 2 | |
| PAOZZ | 5310-582-5677 | WASHER, FLAT: 1/4 IN. PART TWO - PULSE ACQUISITION RADAR TEXT (FRONT) GROUP 01 - TENT ANCHORING COMPONENTS | | EA | 6 | * | * | * | | * | * | | | | 2 | 12 |
| PAOZZ | 8340-205-2759 | SLIP, TENT LINE: FLAT MAGNESIUM, 4 IN. LG, MIL SPEC T-10035 | | EA | 7 | * | * | * | | * | * | | | | 3 | 1 |
| PAOZZ | 8340-823-7451 | PIN, TENT: STEEL, 12 IN. LG, TYPE II, MIL SPEC P-501 | | EA | 19 | * | * | * | | * | * | | | | 3 | 2 |
| MFOZZ | | LINE, TENT: MANILLA, GUY LINE, 3 STRANDS, 3/8 IN. DIA, 12 FT LG MANUFACTURE FROM: | | EA | 7 | | | | | | | | | | 3 | 3 |
| PAFZZ | 4020-231-9021 | ROPE, AS REQUIRED | | FT | | * | * | * | | | | | | | 3 | |

TM10-8340-203-23P
(1) (2)

| SMR CODE | FEDERAL STOCK NUMBER | DESCRIPTION REF NUMBER & MFR CODE | USABLE ON CODE | UNIT OF MEAS | QTY INC IN UNIT | (6) 30-DAY DS MAINT ALLOWANCE | | | (7) 30-DAY GS MAINT ALLOWANCE | | | (8) 1-YR ALW PER 100 EQUIP CNTGY | (9) DEPOT MAINT ALW PER 100 EQUIP | (10) ILLUS-TRATION | |
|----------|----------------------|--|----------------|--------------|-----------------|-------------------------------|-----|-----|-------------------------------|-----|-----|----------------------------------|-----------------------------------|--------------------|-----|
| | | | | | | (A) | (B) | (C) | (A) | (B) | (C) | | | (A) | (B) |
| PAOZZ | 8340-252-2299 | LINE, TENT: COTTON FOOTSTOP, 1/4 IN. DIA, 19 IN. LG TYPE I, CLASS C, MTL SPEC L-1709 | | EA | 12 | * | * | * | | | | * | * | 3 | 4 |
| MFOZZ | | LINE, TENT: MANILLA, 3 STRANDS, 3/8 IN. DIA, MRT, GROUND ADJUSTING LINES MANUFACTURE FROM: | | EA | 12 | | | | | | | | | 3 | 5 |
| PAFZZ | 4020-231-9021 | ROPE, AS REQUIRED | | FT | | * | * | * | | | | | | 3 | |
| MFOZZ | | BRACKET: GROUND LINE ADJUSTING, 1 1/2 X 3 IN. MANUFACTURE FROM: | | EA | 12 | | | | | | | | | 3 | 6 |
| PAFZZ | 5530-262-8180 | PLYWOOD, AS REQUIRED | | SH | | * | * | * | | | | | | 3 | |
| MFOZZ | | LINE, TENT: MANILLA, 3 STRANDS, 1/4 IN. DIA, MRT, GROUND HEM STIFFENER, HEATER DUCT SLEEVE, AND TRAILER JACK SLEEVE MANUFACTURE FROM: | | EA | 6 | | | | | | | | | 3 | 7 |
| PAFZZ | 4020-231-9021 | ROPE, AS REQUIRED | | FT | | * | * | * | | | | | | 3 | |
| MFOZZ | | GROUP 02 - TENTAGE BODY, TENT MANUFACTURE FROM: | | EA | 1 | | | | | | | | | 3 | 8 |
| PAOZZ | 8305-261-8797 | CLOTH, COTTON, WIND RESISTANT, SATREEN, BASIC TENT FABRIC, OLIVE GREEN, ARMY SHADE NO. 107, 35 IN. W, AS REQUIRED | | YD | | * | * | * | | | | | | 3 | |
| PAFZZ | 8305-890-1569 | CLOTH, POLYESTER FIBER, NATURAL, LIGHT PORT, 5.5 OZ, AS REQUIRED | | YD | | * | * | * | | | | | | 3 | |
| PAFZZ | 5325-174-9424 | FASTENER, SLIDE, INTERLOCKING, FRONT WALL, 48 IN. LG, TYPE V, STYLE 1, SIZE H, FED SPEC V-F-00106, 2 EA REQUIRED 538637 (00000) | | EA | | * | * | * | | | | | | 3 | |
| PAFZZ | 5325-174-9057 | FASTENER, SLIDE, INTERLOCKING, LIGHT PORT, 48 IN. LG, TYPE III, STYLE 1, SIZE H, FED SPEC V-F-00106, 2 EA REQUIRED 53820 (00000) | | EA | | * | * | * | | | | | | 3 | |
| PAFZZ | 5325-174-9016 | FASTENER, SLIDE, INTERLOCKING, PERSONNEL DOOR, 84 IN. LG, TYPE III, STYLE 1, SIZE H, FED SPEC V-F-00106, 1 EA REQUIRED 538230 (00000) | | EA | | * | * | * | | | | | | 3 | |
| PAFZZ | 5325-292-5340 | FASTENER, SNAP, TIE DOWN STRAP, BRASS, BRONZE PLATED FINISH, 500 PER PKG, AS REQUIRED | | PK | | * | * | * | | | | | | 3 | |
| PAFZZ | 5325-290-5933 | FASTENER, SNAP, TIE DOWN STRAP, BRASS, ENAMEL FINISH, 4 EA REQUIRED AN227-889B (00000) | | EA | | * | * | * | | | | | | 3 | |
| PAOZZ | 5325-231-6622 | GROMMET, METALLIC, BRASS, BLACK CHEMICAL FINISH, NO. 4, FOOTSTOP, FRONT WALL, GROMMET TAB, AND GUY LINE, 81 EA REQUIRED 8460200 (00000) | | EA | | * | * | * | | | | | | 3 | |
| PAFZZ | 5325-972-5271 | GROMMET, METALLIC, TENT ROOF, BRASS, OBLONG, 2 EA REQUIRED A867WITHWASHER (57771) | | EA | | * | * | * | | | | | | 3 | |
| PAOZZ | 5325-025-3038 | SOCKET, TURNBUTON FASTENER, FRONT WALL, SIDE WALL, LEFT AND RIGHT, 27 EA REQUIRED BS78403 (61864) | | EA | | * | * | * | | | | | | 3 | |

| TM10-8340-203-23P | | | | | | (6) | | | (7) | | | (8) | (9) | (10) | | |
|-------------------|----------------------|---|----------------|--------------|-----------------|---------------------------|-------|--------|---------------------------|-------|--------|-------------------------------|-------------------------------|-------------------|----------|----|
| (1) | (2) | (3) | | (4) | (5) | 30-DAY DS MAINT ALLOWANCE | | | 30-DAY GS MAINT ALLOWANCE | | | 1-YR ALW PER 100 EQUIP CNTGTY | DEPOT MAINT ALW PER 100 EQUIP | ILLUS-TRATION (A) | ITEM (B) | |
| SMR CODE | FEDERAL STOCK NUMBER | DESCRIPTION | USABLE ON CODE | UNIT OF MEAS | QTY INC IN UNIT | (A) | (B) | (C) | (A) | (B) | (C) | | | FIG NO | ITEM NO | |
| | | REF NUMBER & MFR CODE | | | | 1-20 | 21-50 | 51-100 | 1-20 | 21-50 | 51-100 | | | | | |
| MOOZZ | | THONG; SLIDE FASTENER MANUFACTURE FROM: | | EA | 10 | | | | | | | | | | 3 | |
| PAOZZ | 8315-262-2785 | BRAID, AS REQUIRED | | YD | * | * | * | | | | | | | | 3 | |
| PAFZZ | 8310-823-6888 | THREAD, POLYESTER, NATURAL, TICKET NO. P, AS REQUIRED | | SP | * | * | * | | | | | | | | 3 | |
| | | GROUP 03 - TENT SUPPORT COMPONENTS | | | | | | | | | | | | | | |
| MFOFZ | | SUPPORT: LUNETTE W/ROD, 60 IN. LG MANUFACTURE FROM: | | EA | 1 | | | | | | | | | | 4 | 1 |
| PAFZZ | 4710-542-2906 | PIPE, AS REQUIRED 5-4-660-2-4 (81337) | | FT | * | * | * | | | | | | | | 4 | |
| PAFZZ | 9510-684-6052 | ROD, AS REQUIRED 5-4-660-2-5 (81337) | | FT | * | * | * | | | | | | | | 4 | |
| PAOZZ | 5670-989-2611 | ELBOW, RAILING: TOP OUTER SUPPORT TO SIDE DIAGONAL SUPPORT, ALUMINUM, 1 1/4 IN., NO.3 3-1 (00403) | | EA | 2 | * | * | * | | | | * | * | | 4 | 2 |
| PAOZZ | 5305-724-6810 | SECTSCREW: 3/8-16 X 3/8 IN. LG | | EA | 4 | * | * | * | | | | * | * | | 4 | 3 |
| MFOZZ | | SUPPORT: TOP, OUTER, 92 IN. LG MANUFACTURE FROM: | | EA | 1 | | | | | | | | | | 4 | 4 |
| PAFZZ | 4710-542-2906 | PIPE, AS REQUIRED 5-4-660-2-2 (81337) | | FT | * | * | * | | | | | | | | 4 | |
| PAOZZ | 5670-989-2612 | TEE, RAILING, OUTER TOP SUPPORT TO LUNETTE SUPPORT, ALUMINUM, 1 1/4 IN., NO.5 5-1 (00403) | | EA | 1 | * | * | * | | | | * | * | | 4 | 5 |
| PAOZZ | 5305-724-6810 | SETScrew: 3/8-16 X 3/8 IN. LG | | EA | 3 | * | * | * | | | | * | * | | 4 | 6 |
| MFOZZ | | SUPPORT: SIDE DIAGONAL, 75 1/4 IN. LG MANUFACTURE FROM | | EA | 2 | | | | | | | | | | 4 | 7 |
| PAFZZ | 4710-542-2906 | POPE, AS REQUIRED 5-4-600-2-3 (81337) | | FT | * | * | * | | | | | | | | 4 | |
| PAFZZ | 8340-973-2267 | SPINDLE: W/O DRILLED HOLE, 2 EA REQUIRED 5-4-660ITEM2-6 (81337) | | EA | * | * | * | | | | | | | | 4 | |
| PAFZZ | 5315-846-8337 | PIN, SPRING, 1/4 X 1 5/8 IN. LG, 2 EA REQUIRED | | EA | * | * | * | | | | | | | | 4 | |
| PAOZZ | 8340-973-2270 | SUPPORT: TOP, INNER 5-4-600ITEM2-1 (81337) | | EA | 1 | * | * | * | | | | * | * | | 4 | 8 |
| MFOZZ | | SCREW, CAP, HEXAGON HEAD: 1/2-13 X 3 IN., MODIFIED MANUFACTURE FROM: | | EA | 2 | | | | | | | | | | 4 | 9 |
| PAFZZ | 5305-815-5514 | SCREW, 2 EA REQUIRED 5-4-660-207 (81337) | | EA | * | * | * | | | | | | | | 4 | |
| PAOZZ | 5310-767-9425 | WASHER, FLAT: 1/2 IN. | | EA | 2 | * | * | * | | | | * | * | | 4 | 10 |
| | | PART THREE - PULSE ACQUISITION RADAR TENT, APT | | | | | | | | | | | | | | |
| | | GROUP 01 - TENT ANCHORING COMPONENTS | | | | | | | | | | | | | | |
| PAOZZ | 8340-823-7451 | PIN, TENT: STEEL, 12 IN. LG, TYPE II, MIL SPEC P-501 | | EA | 12 | * | * | * | | | | * | * | | 5 | 1 |
| MFOZZ | | LINE, TENT: MANILLA, 3 STRANDS, 3/8 IN. DIA, MRT GROUND ADJUSTING LINES MANUFACTURE FROM: | | EA | 12 | | | | | | | | | | 5 | 2 |
| PAFZZ | 4020-231-9021 | ROPE, AS REQUIRED | | FT | * | * | * | | | | | | | | 5 | |

TM10-8340-203-23P
(1) (2)

SMR FEDERAL
CODE STOCK
NUMBER

(3)

DESCRIPTION
REF NUMBER & MFR CODE

USABLE
ON
CODE

UNIT
OF
MEAS

(4)

(5)

(6)
30-DAY DS MAINT
ALLOWANCE
(A) (B) (C)

(7)
30-DAY GS MAINT
ALLOWANCE
(A) (B) (C)

(8)
1-YR
ALW
PER
100
EQUIP
CNTGTY

(9)
DEPOT
MAINT
ALW
PER
100
EQUIP

(10)
ILLUS-
TRATION
(A) (B)

FIG
NO
ITEM
NO

| SMR CODE | FEDERAL STOCK NUMBER | DESCRIPTION REF NUMBER & MFR CODE | USABLE ON CODE | UNIT OF MEAS | (4) | (5) | (6) 30-DAY DS MAINT ALLOWANCE (A) (B) (C) | (7) 30-DAY GS MAINT ALLOWANCE (A) (B) (C) | (8) 1-YR ALW PER 100 EQUIP CNTGTY | (9) DEPOT MAINT ALW PER 100 EQUIP | (10) ILLUS- TRATION (A) (B) |
|----------|----------------------|---|----------------|--------------|-----|-----|--|--|---|---|--------------------------------------|
| MFOZZ | | BRACKET: GROUND LINE ADJUSTING, 1 1/2 X 3 IN. | | EA | 12 | | | | | | 5 3 |
| PAFZZ | 5530-262-8180 | MANUFACTURE FROM: PLYWOOD, AS REQUIRED 514-713 (81337) | | SH | * | * | * | | | | 5 |
| PAOZZ | 8340-252-2299 | LINE, TENT: COTTON, FOOTSTOP, 1/4 IN. DIA, 19 IN. LG, TYPE I, CLASS C, MIL SPEC L-1709 | | EA | 12 | * | * | * | * | * | 5 4 |
| MFOZZ | | LINE, TENT: MANILLA, 3 STRANDS, 1/4 IN. DIA, MRT, GROUND HEM STIFFENER, HEATER DUCT SLEEVE, AND TRAILER JACK SLEEVE MANUFACTURE FROM: | | EA | 5 | | | | | | 5 5 |
| PAFZZ | 4020-231-9021 | ROPE, AS REQUIRED GROUP 02 - TENTAGE | | FT | * | * | * | | | | 5 |
| MFOFZ | | BODY, TENT MANUFACTURE FROM: | | EA | 1 | | | | | | 5 6 |
| PAOZZ | 8305-261-8797 | CLOTH, COTTON, WIND RESISTANT SATEEN, BASIC TENT FABRIC, OLIVE GREEN, ARMY SHADE NO. 107, 35 IN. W, AS REQUIRED | | YD | * | * | * | | | | 5 |
| PAFZZ | 8305-890-1569 | CLOTH, POLYESTER FIBER, NATURAL, LIGHT PORT, 5.5 OZ, AS REQUIRED | | YD | * | * | * | | | | 5 |
| PAFZZ | 5325-174-9057 | FASTENER, SLIDE, INTERLOCKING, LIGHT, PORT, 48 IN. LG, TYPE III, STYLE 1, SIZE H, FED SPEC V-F-00106, 2 EA REQUIRED 538220 (00000) | | EA | * | * | * | | | | 5 |
| PAFZZ | 5325-174-9014 | FASTENER, SLIDE INTERLOCKING, PERSONNEL DOOR, 80 IN. LG, TYPE III, STYLE 1, SIZE H, FED SPEC V-F-00106, 1 EA REQUIRED 538229 (00000) | | EA | * | * | * | | | | 5 |
| PAFZZ | 5325-292-5340 | FASTENER, SNAP, TIE DOWN STRAP, BRASS, BRONZE PLATED FINISH, 500 PER PKG, AS REQUIRED | | PK | * | * | * | | | | 5 |
| PAFZZ | 5325-290-5933 | FASTENER, SNAP, TIE DOWN STRAP BRASS, ENAMEL FINISH, 7 EA REQUIRED AN27-889B (88044) | | EA | * | * | * | | | | 5 |
| PAOZZ | 5325-231-6622 | GROMMET, METALLIC, BRASS, BLACK CHEMICAL FINISH, NO. 4, FOOTSTOP, FRONT WALL AND GROMMET TAB, 62 EA REQUIRED 8460200 (00000) | | EA | * | * | * | | | | 5 |
| PAFZZ | 5325-972-5271 | GROMMET, METALLIC, TENT ROOF, BRASS, ORLONG, 2 EA REQUIRED A867WTHWASHER (57771) | | EA | * | * | * | | | | 5 |
| PAOZZ | 5325-025-3038 | SOCKET, TURNBUTON FASTENER, FRONT WALL, SIDE WALL, LEFT AND RIGHT, 27 EA REQUIRED BS78403 (61864) | | EA | * | * | * | | | | 5 |
| MOOZZ | | THONG: SLIDE FASTENER MANUFACTURE FROM: | | EA | 6 | | | | | | 5 |
| PAOZZ | 8315-262-2785 | BRAID, AS REQUIRED | | YD | * | * | * | | | | 5 |
| PAFZZ | 8310-988-1299 | THREAD, POLYESTER, NATURAL, TICKET NO. F, AS REQUIRED | | SP | * | * | * | | | | 5 |

TM10-8340-203-23P
(1) (2)

| SMR CODE | FEDERAL STOCK NUMBER | DESCRIPTION REF NUMBER & MFR CODE | USABLE ON CODE | UNIT OF MEAS | (4) | (5) | (6) 30-DAY DS MAINT ALLOWANCE | | | (7) 30-DAY GS MAINT ALLOWANCE | | | (8) 1-YR ALW PER 100 EQUIP CNTGY | (9) DEPOT MAINT ALW PER 100 EQUIP | (10) ILLUS-TRATION | |
|----------|----------------------|--|----------------|--------------|-----|-------|-------------------------------|-------|--------|-------------------------------|-------|--------|----------------------------------|-----------------------------------|--------------------|---------|
| | | | | | | | (A) | (B) | (C) | (A) | (B) | (C) | | | (A) | (B) |
| | | GROUP 03 - TENT SUPPORT COMPONENTS | | | | | 1-20 | 21-50 | 51-100 | 1-20 | 21-50 | 51-100 | | | FIG NO | ITEM NO |
| PAOZZ | 5670-989-2611 | ELBOW, RAILING: TOP OUTER SUPPORT TO SIDE DIAGONAL SUPPORT, ALUMINUM, 1 1/4 IN., NO. 3 3-1 (00403) | | EA | 2 | * | * | * | | | | * | * | | 6 | 1 |
| PAOZZ | 5305-989-5843 | SETScrew: 3/8-16 X 3/8 IN. LG | | EA | 4 | * | * | * | | | | * | * | | 6 | 2 |
| MFOZZ | | SUPPORT: TOP, OUTER, 92 IN. LG MANUFACTURE FROM: | | EA | 1 | | | | | | | | | | 6 | 3 |
| PAFZZ | 4710-542-2906 | PIPE, AS REQUIRED 5-4-660-2-2 (81337) | | FT | | * | * | * | | | | | | | 6 | |
| MFOZZ | | SUPPORT: SIDE DIAGONAL, 54 7/8 IN. LG MANUFACTURE FROM: | | EA | 2 | | | | | | | | | | 6 | 4 |
| PAFZZ | 4710-542-2906 | PIPE, AS REQUIRED 5-4-660-3-3 (81337) | | FT | | * | * | * | | | | | | | 6 | |
| PAFZZ | 8340-973-2267 | SPINDLE, W/O DRILLED HOLE, 2 EA REQUIRED 5-4-660ITEM2-6 (81337) | | EA | | * | * | * | | | | | | | 6 | |
| PAFZZ | 5315-846-8337 | PIN, SPRING, 1/4 X 1 5/8 IN., 2 EA REQUIRED | | EA | | * | * | * | | | | | | | 6 | |
| PAOZZ | 8340-973-2270 | SUPPORT: TOP, INNER 5-4-660ITEM2-1 (81337) | | EA | 1 | * | * | * | | | | * | * | | 6 | 5 |
| MFOZZ | | SCREW, CAP, HEXAGON HEAD: 1/2-13 X 3 IN., MODIFIED MANUFACTURE FROM: | | EA | 2 | | | | | | | | | | 6 | 6 |
| PAFZZ | 5305-815-5514 | SCREW, 2 EA REQUIRED 514-660-2-7 (81337) | | EA | | | EA | | | | | | | | 6 | |
| PAOZZ | 5310-767-9425 | WASHER, FLAT: 1/2 IN. | | EA | 2 | * | * | * | | | | * | * | | 6 | 7 |
| | | PART FOUR - RANGE ONLY RADAR, CW ACQUISITION RADAR, AND CW ILLUMINATOR RADAR TENT | | | | | | | | | | | | | | |
| | | GROUP 01 - TENT ANCHORING COMPONENTS | | | | | | | | | | | | | | |
| PAOZZ | 8340-823-7451 | PIN, TENT: STEEL, 12 IN. LG, TYPE II, MIL SPEC P-501 | | EA | 18 | * | * | * | | | | * | * | | 7 | 1 |
| PAOZZ | 8340-205-2759 | SLIP, TENT LINE: FLAT MAGNESIUM, 4 IN. LG, MIL SPEC T-10035 | | EA | 4 | * | * | * | | | | * | * | | 7 | 2 |
| MFOZZ | | LINE TENT: MANILA, 3 STRANDS, 1/4 IN. DIA, MRT, BLACKOUT HEM STIFFENER, GROUND ADJUSTING LINES, GUY LINE AND HEATER DOCT SLEEVE MANUFACTURE FROM: | | EA | 23 | | | | | | | | | | 7 | 3 |
| PAFZZ | 4020-231-9021 | ROPE, AS REQUIRED | | FT | | * | * | * | | | | | | | 7 | |
| MFOZZ | | BRACKET: GROUND LINE ADJUSTING, 1 1/2 IN. X 3 IN. MANUFACTURE FROM: | | EA | 14 | | | | | | | | | | 7 | 4 |
| PAFZZ | 5530-262-8180 | PLYWOOD, AS REQUIRED 5-4-173 (81337) | | SH | | * | * | * | | | | | | | 7 | |
| PAOZZ | 8340-252-2299 | LINE, TENT: COTTON FOOTSTOP, 1/4 IN. DIA, 19 IN. LG, TYPE I, CLASS C, MIL SPEC L-1709 | | EA | 14 | * | * | * | | | | * | * | | 7 | 5 |

| TM10-8340-203-23P | | DESCRIPTION | (4) | (5) | (6) | | | (7) | | | (8) | (9) | (10) | | | | |
|-------------------|----------------------------|---|-----|-----|----------------------|--------------------|------------|------------------------------|-----|-----|------------------------------|-----|------|-------------|-------------------------------|--------------------------|----------------|
| (1) | (2) | | | | USABLE ON CODE | UNIT OF MEAS | QTY INC | 30-DAY DS MAINT ALLOWANCE | | | 30-DAY GS MAINT ALLOWANCE | | | 1-YR ALW | DEPOT MAINT ALW | ILLUS- TRATION (A) | ITEM NO (B) |
| SMR CODE | FEDERAL STOCK NUMBER | | | | | | | REF NUMBER & MFR CODE | (A) | (B) | (C) | (A) | (B) | (C) | PER 100 EQUIP CNTGTY | | |
| | | GROUP 02 - TENTAGE | | | | | | | | | | | | | | | |
| MPOFZ | | BODY, TENT | | EA | 1 | | | | | | | | | | 7 | 6 | |
| | | MANUFACTURE FROM: | | | | | | | | | | | | | | | |
| PAOZZ | 8305-261-8797 | CLOTH, COTTON, WIND RESISTANT, SATREEN, BASIC TENT FABRIC, OLIVE GREEN, ARMY SHADE NO. 107, 35 IN. W, AS REQUIRED | | YD | | * | * | * | | | | | | | 7 | | |
| PAFZZ | 8305-890-1569 | CLOTH, POLYESTER FIBER, NATURAL, LIGHT PORT, 5.5 OZ, AS REQUIRED | | YD | | * | * | * | | | | | | | 7 | | |
| PAFZZ | 5325-174-9067 | FASTENER, SLIDE, INTERLOCKING, FRONT WALL, 30 IN. LG, TYPE V STYLE 1, SIZE H, FED SPEC V-F-0106, 2 EA REQUIRED | | EA | | | 7 | | | | | | | | | | |
| PAFZZ | 5325-174-9057 | FASTENER, SLIDE, INTERLOCKING, LIGHT PORT, 48 IN. LG, TYPE III, STYLE 1, SIZE H, FED SPEC V-F-00106, 2 EA REQUIRED | | EA | | * | * | * | | | | | | | 7 | | |
| PAFZZ | 5325-174-9014 | FASTENER, SLIDE, INTERLOCKING, PERSONNEL DOOR, 80 IN. LG, TYPE III, STYLE 1, SIZE H, FED SPEC V-F-00106, 1 EA REQUIRED | | EA | | * | * | * | | | | | | | 7 | | |
| PAFZZ | 5325-286-9554 | FASTENER, SNAP, FRONT WALL, BRASS, BLACK CHEMICAL FINISH, 100 PER PKG, AS REQUIRED | | PK | | * | * | * | | | | | | | 7 | | |
| PAFZZ | 5325-292-5340 | FASTENER, SNAP, TIE DOWN STRAP, BRASS, BRONZE PLATED FINISH, 500 PER PKG, AS REQUIRED | | PK | | * | * | * | | | | | | | 7 | | |
| PAFZZ | 5325-290-5933 | FASTENER, SNAP, TIE DOWN STRAP, BRASS, ENAMEL FINISH, 8 EA REQUIRED AN277-8B9B (88044) | | EA | | * | * | * | | | | | | | 7 | | |
| PAOZZ | 5325-231-6622 | GROMMET, METALLIC, BRASS, BLACK CHEMICAL FINISH, NO. 4, FOOTSTOP, GROMMET TAB, AND GUY LINE, 90 EA REQUIRED | | EA | | * | * | * | | | | | | | 7 | | |
| PAFZZ | 5325-972-5271 | GROMMET, METALLIC, TENT ROOF, BRASS, OBLONG, 6 EA REQUIRED A867WITHWASHER (57771) | | EA | | * | * | * | | | | | | | 7 | | |
| PAOZZ | 5325-025-3038 | SOCKET, TURNBUTTON FASTENER, FRONT WALL, SIDE WALL, LEFT AND RIGHT, 27 EA REQUIRED BX78403 (61864) | | EA | | * | * | * | | | | | | | 7 | | |
| MOOZZ | | TRONG: SLIDE FASTNERER MANUFACTURE FROM: | | EA | 10 | | | | | | | | | | 7 | | |
| PAOZZ | 8315-262-2784 | BRAID, AS REQUIRED | | YD | | * | * | * | | | | | | | 7 | | |
| MFPZZ | | TLET TAPE: COTTON, OLIVE DRAB, 3/4 IN. W, SIDE WALL TAKE UP, 16 IN. LG, WINDOW BLACKOUT CURTAIN MANUFACTURE FROM: | | EA | 38 | | | | | | | | | | 7 | | |
| PAFZZ | 8315-253-6289 | TAPE, AS REQUIRED | | YD | | * | * | * | | | | | | | 7 | | |
| PAFZZ | 8310-988-1299 | THREAD, POLYESTER, NATURAL, TICKET NO. F, AS REQUIRED | | SP | | * | * | * | | | | | | | 7 | | |
| | | GROUP 03 - TENT SUPPORT COMPONENTS | | | | | | | | | | | | | | | |
| PAOZZ | 8340-973-2269 | SUPPORT: LUNETTE 5-4-718ITEM1-4 (81337) | | EA | 1 | * | * | * | | * | * | | | 8 | 1 | | |
| PAOZZ | 5310-903-5966 | NUT, PLAIN, HEXAGON: LUNETTE SUPPORT, 1/4-20 THD SIZE | | EA | 2 | * | * | * | | * | * | | | 8 | 2 | | |

| TM10-8340-203-23P | | (3) | (4) | (5) | (6) | | | (7) | | | (8) | (9) | (10) | | |
|-------------------|----------------------|--|-----|-----|----------------|--------------|-----------------|---------------|---------------|---------------|---------------|---------------|---------------|-------------------------------|-------------------------------|
| (1) | (2) | | | | USABLE ON CODE | UNIT OF MEAS | QTY INC IN UNIT | ALLOWANCE (A) | ALLOWANCE (B) | ALLOWANCE (C) | ALLOWANCE (A) | ALLOWANCE (B) | ALLOWANCE (C) | 1-YR ALW PER 100 EQUIP CNTGTY | DEPOT MAINT ALW PER 100 EQUIP |
| SMR CODE | FEDERAL STOCK NUMBER | DESCRIPTION REF NUMBER & MFR CODE | | | | 1-20 | 21-50 | 51-100 | 1-20 | 21-50 | 51-100 | | | FIG NO | ITEM NO |
| PAOZZ | 5310-042-6758 | WASHER, LOCK: LUNETTE SUPPORT, 1/4 IN. | EA | 2 | * | * | * | | * | * | | | | 8 | 3 |
| PAOZZ | 5305-207-8253 | SCREW, CAP, HEXAGON HEAD: LUNETTE SUPPORT, 1/4-20 X 1 IN. LG | EA | 2 | * | * | * | | * | * | | | | 8 | 4 |
| PAOZZ | 5310-582-5677 | WASHER, FLAT: LUNETTE SUPPORT, 1/4 IN. | EA | 2 | * | * | * | | * | * | | | | 8 | 5 |
| PAOZZ | 5670-989-2611 | ELBOW, RAILING: OUTER TOP SUPPORT, ALUMINUM, 1 1/4 IN., NO. 3 3-1 (00403) | EA | 4 | * | * | * | | * | * | | | | 8 | 6 |
| PAOZZ | 5305-984-5689 | SCREW, MACHINE: SUPPORT TO ELBOWS, 3/8-16 X 3/4 IN. LG | EA | 4 | * | * | * | | * | * | | | | 8 | 7 |
| PAOZZ | 5670-989-2612 | TEE, RAILING: OUTER TOP SUPPORT TO LUNETTE SUPPORT, ALUMINUM, 1 1/4 IN., NO. 5 5-1 (00403) | EA | 1 | * | * | * | | * | * | | | | 8 | 8 |
| PAOZZ | 5305-984-5687 | SCREW, MACHINE: LUNETTE SUPPORT TO TEE, 3/8-16 X 1/2 IN. LG | EA | 3 | * | * | * | | * | * | | | | 8 | 9 |
| MFOZZ | | SUPPORT: TOP, OUTER, 92 IN. LG MANUFACTURE FROM: | EA | 1 | | | | | | | | | | 8 | 10 |
| PAFZZ | 4710-542-2906 | PIPE, AS REQUIRED 5-4-718-1-3 (81337) | FT | | * | * | * | | | | | | | 8 | |
| PAOZZ | 5670-989-2611 | ELBOW, RAILING: INNER TOP SUPPORT, ALUMINUM, 1 1/4 IN., NO. 3 3-1 (00403) | EA | 2 | * | * | * | | * | * | | | | 8 | 11 |
| PAOZZ | 5305-984-5687 | SCREW, MACHINE: INNER TOP SUPPORT TO ELBOWS, 3/8-16 X 1/2 IN. LG | EA | 2 | * | * | * | | * | * | | | | 8 | 12 |
| PAOZZ | 5305-984-5689 | SCREW, MACHINE: SIDE TOP SUPPORTS TO ELBOWS, 3/8-16 X 3/4 IN. LG | EA | 2 | * | * | * | | * | * | | | | 8 | 13 |
| MFOZZ | | SUPPORT: TOP, SIDE, 78 3/8 IN. LG MANUFACTURE FROM: | EA | 2 | | | | | | | | | | 8 | 14 |
| PAFZZ | 4710-542-2906 | PIPE, AS REQUIRED 5-4-178-1-2 (81337) | FT | | * | * | * | | | | | | | 8 | |
| PAOZZ | 8340-973-2271 | SUPPORT: TOP, INNER 5-4-718ITEM1-1 (81337) | EA | 1 | * | * | * | | * | * | | | | 8 | 15 |
| MFOZZ | | SCREW, CAP, HEXAGON: INNER 1/4-28 X 3/4 IN. LG, MODIFIED MANUFACTURE FROM: | EA | 2 | | | | | | | | | | 8 | 16 |
| PAFZZ | 5305-685-3511 | SCREW, 2 EA REQUIRED 5-4-718-1-8 (81337) | EA | | * | * | * | | | | | | | 8 | |
| PAOZZ | 5340-828-4765 | RING, RETAINING: STEEL, TYPE E MS16633-4021 (96906) | EA | 2 | * | * | * | | * | * | | | | 8 | 17 |
| MFOZZ | | SCREW, CAP, HEXAGON HEAD: OUTER, 1/4-28 X 2 1/8 IN. LG, MODIFIED MANUFACTURE FROM: | EA | 4 | | | | | | | | | | 8 | 18 |
| PAFZZ | 5305-012-4058 | SCREW, 4 EA REQUIRED 5-4-718-1-7 (81337) | EA | | * | * | * | | | | | | | 8 | |
| PAOZZ | 5310-582-5677 | WASHER, FLAT: 1/4 IN. | EA | 6 | * | * | * | | * | * | | | | 8 | 19 |
| | | PART FIVE - HIGH POWER ILLUMINATOR TENT, FRONT | | | | | | | | | | | | | |
| | | GROUP 01 - TENT ANCHORING COMPONENTS | | | | | | | | | | | | | |
| PAOFF | 8340-119-1257 | TENT, CONSOLE, HIGH POWER ILLUMINATOR, FRONT ASSEMBLY 5-4-1116 (81337) | EA | 1 | * | * | * | | * | * | | | | 9 | |
| PAOZZ | 8340-205-2759 | SLIP, LINE TENT 5-4-1116-11 (81337) | EA | 5 | * | * | * | | * | * | | | | 9 | 1 |

| TM10-8340-203-23P | | (3) | (4) | (5) | (6) | | | (7) | | | (8) | (9) | (10) | | |
|-------------------|---------------|---|--------|------|-----------|-----------|-----------|--------|-------|--------|---------|--------|-------|-----|------|
| (1) | (2) | | | | ALLOWANCE | ALLOWANCE | ALLOWANCE | 1-YR | DEPOT | ILLUS- | TRATION | | | | |
| SMR | FEDERAL | DESCRIPTION | USABLE | UNIT | QTY | (A) | (B) | (C) | (A) | (B) | (C) | ALW | MAINT | FIG | ITEM |
| CODE | STOCK | REF NUMBER & MFR CODE | ON | OF | INC | 1-20 | 21-50 | 51-100 | 1-20 | 21-50 | 51-100 | PER | ALW | NO | NO |
| NUMBER | NUMBER | | CODE | MEAS | IN | | | | | | | 100 | PER | | |
| | | | | | UNIT | | | | | | | EQUIP | 100 | | |
| | | | | | | | | | | | | CNTGTY | EQUIP | | |
| PAOZZ | 8340-252-2273 | LINE, GUY 5-4-1117-10 (81337) | | EA | 6 | * | * | * | | | | * | * | 9 | 2 |
| PAFZZ | 8340-252-2269 | LINE, TENT: 1/4 IN. DIA, 8 FT LG 5-4-1117-2-4 (81337) | | FT | V | * | * | * | | | | * | * | 9 | 3 |
| PAOZZ | 8340-823-7451 | PIN, TENT, STEEL: 12 IN. | | EA | 16 | * | * | * | | | | * | * | 9 | 4 |
| PAOZZ | 8340-261-9750 | PIN, TENT, WOOD: 16 IN. GROUP 02 - TENTAGE | | EA | 16 | * | * | * | | | | * | * | 9 | 5 |
| MFOZZ | | BODY, TENT MANUFACTURE FROM: | | EA | 1 | | | | | | | | | 9 | 6 |
| MFFZZ | | FASTENER, TAPE, PILE: 1 IN. 5-4-1117-2-27 (81337) MANUFACTURE FROM: | | EA | V | | | | | | | | | 9 | |
| PAFZZ | 8315-985-7450 | FASTENER, TAPE, HOOK-PILE, NYLON, TYPE II, OLIVE DRAB SHADE, AS REQUIRED MILF21840 (00000) | | PK | | * | * | * | | | | | | 9 | |
| MFFZZ | | FASTENER, TAPE, HOOK: 1 IN. 5-4-1117-2-20 (81337) MANUFACTURE FROM: | | EA | V | | | | | | | | | 9 | |
| PAFZZ | 8315-985-7450 | FASTENER, TAPE, HOOK-PILE, NYLON, TYPE II, OLIVE DRAB SHADE, AS REQUIRED MILF21840 (00000) | | PK | | * | * | * | | | | | | 9 | |
| MFFZZ | | REINFORCEMENT MANUFACTURE FROM: | | EA | V | | | | | | | | | 9 | |
| PAFZZ | 8315-253-6293 | TAPE, COTTON, TEXTILE, TYPE I CLASS 4, OLIVE DRAB, AS REQUIRED | | YD | | * | * | * | | | | | | 9 | |
| PAFZZ | 8305-826-6171 | CLOTH, COTTON, DUCK, CLASS I, OLIVE DRAB, 9.85 OZ, AS REQUIRED | | YD | | * | * | * | | | | | | 9 | |
| MFFZZ | | TAB, EYELET 5-4-1117-2-43 (81337) MANUFACTURE FROM: | | EA | 1 | | | | | | | | | 9 | |
| PAFZZ | 9330-102-9880 | SHEET, PLASTIC, MILP22241, TYPE I, AS REQUIRED | | RL | | * | * | * | | | | | | 9 | |
| MFFZZ | | TAPE, TIE 5-4-1117-2-47 (81337) MANUFACTURE FROM: | | EA | V | | | | | | | | | 9 | |
| PAFZZ | 8315-253-6289 | TAPE, COTTON, TEXTILE, TYPE I, CLASS 4, 3/4 IN., OLIVE DRAB, AS REQUIRED | | YD | | * | * | * | | | | | | 9 | |
| PAFZZ | 5325-231-6590 | GROMMET, METALLIC, NO. 2, AS REQUIRED | | EA | | * | * | * | | | | | | 9 | |
| PAOZZ | 5325-641-0295 | GROMMET, METALLIC, NO. 4, AS REQUIRED | | EA | | * | * | * | | | | | | 9 | |
| MFFZZ | | WINDOW ASSEMBLY 5-4-1121-5-5 (81337) MANUFACTURE FROM: | | EA | 1 | | | | | | | | | 9 | |
| PAFZZ | 8305-890-1569 | CLOTH, POLYESTER, AS REQUIRED | | YD | | * | * | * | | | | | | 9 | |
| PAFZZ | 5325-182-9646 | FASTENER, SLIDE, 1 EA REQUIRED 5-4-1120-5-20 (81337) | | EA | | * | * | * | | | | | | 9 | |
| PAFZZ | 8310-988-1300 | THREAD, POLYESTER, TYPE I, CLASS 1, SUB-CLASS B, SIZE F, 4 PLYES, AS REQUIRED | | SP | | * | * | * | | | | | | 9 | |

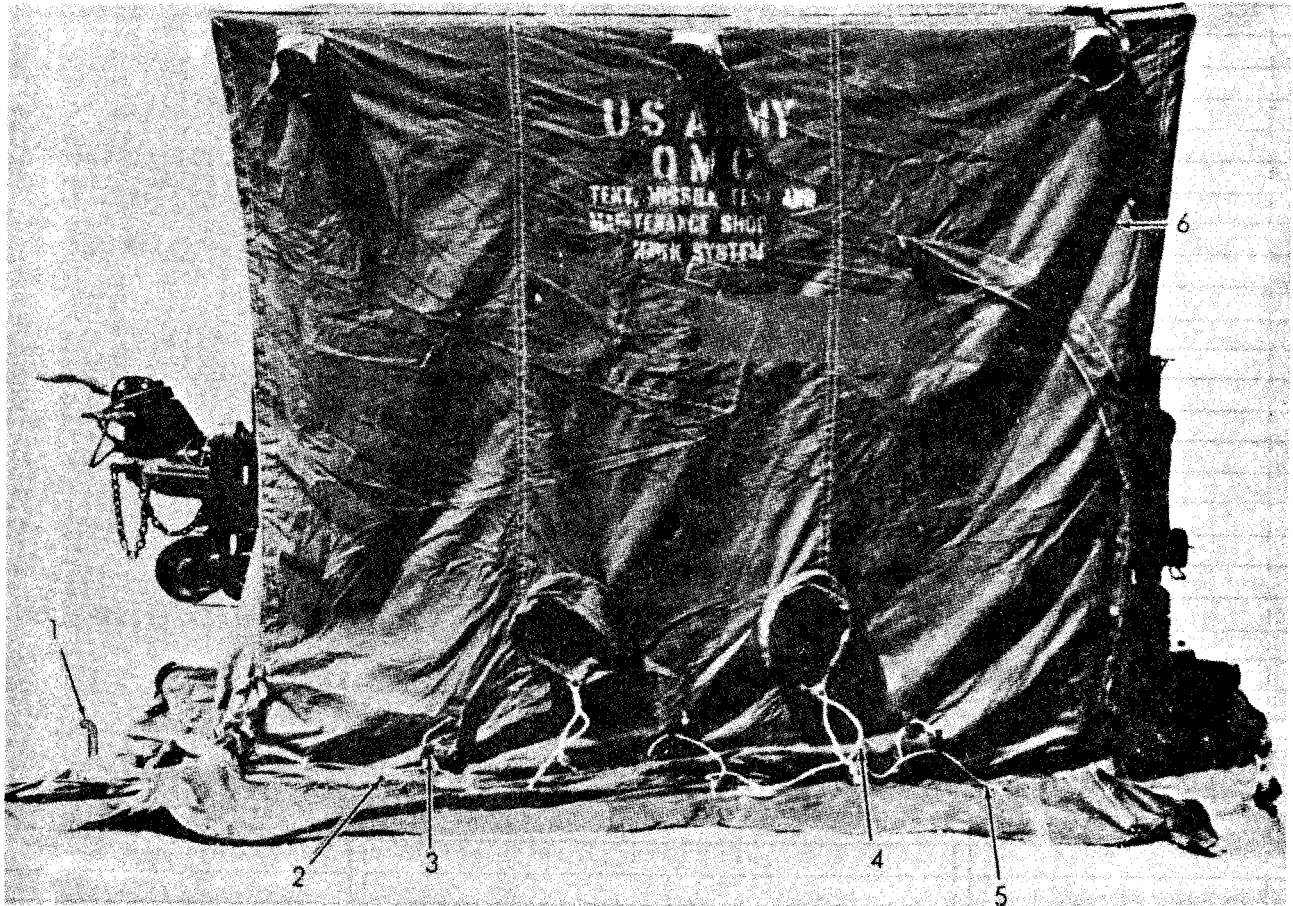
| SMR CODE | FEDERAL STOCK NUMBER | DESCRIPTION REF NUMBER & MFR CODE | USABLE ON CODE | UNIT OF MEAS | QTY INC IN UNIT | (6) 30-DAY DS MAINT ALLOWANCE | | | (7) 30-DAY GS MAINT ALLOWANCE | | | (8) 1-YR ALW PER 100 EQUIP CNTGY | (9) DEPOT MAINT ALW PER 100 EQUIP | (10) ILLUS-TRATION | |
|----------|----------------------|--|----------------|--------------|-----------------|-------------------------------|-------|--------|-------------------------------|-------|--------|----------------------------------|-----------------------------------|--------------------|---------|
| | | | | | | (A) | (B) | (C) | (A) | (B) | (C) | | | FIG NO | ITEM NO |
| | | GROUP 03 - TENT SUPPORT COMPONENTS | | | | 1-20 | 21-50 | 51-100 | 1-20 | 21-50 | 51-100 | | | | |
| PAOZZ | 8340-121-1318 | FRAME, TENT: HIGH POWER ILLUMINATOR, FRONT ASSEMBLY 5-4-1103-2 (81337) | | EA | 1 | * | * | * | | | | | | 10 | |
| MFOZZ | | CORD, SOLID, BRAID 5-4-1103-5 (81337) MANUFACTURE FROM: | | EA | V | | | | | | | | | 10 | 1 |
| PAFZZ | 4020-180-6680 | CORD, POLYESTER, 1/8 IN. DIA, AS REQUIRED | | YD | | * | * | * | | | | | | 10 | |
| PAOZZ | 8340-459-0513 | PIN: 3/8 IN. DIA. 3 IN. LG 5-4-1105-3-5 (81337) | | EA | 4 | * | * | * | | * | * | | | 10 | 2 |
| PAOZZ | 8340-459-0509 | CORNER SUPPORT ASSEMBLY 5-4-1103-2-1 (81337) | | EA | 2 | * | * | * | | * | * | | | 10 | 3 |
| PAOZZ | 5305-088-8923 | SCREW, MACHINE: TRUSS HEADED, SLOTTED 1/4-28 X 1 1/2 IN. LG 5-4-1103-2-16 (81337) | | EA | 11 | * | * | * | | * | * | | | 10 | 4 |
| PAOZZ | 8340-459-0538 | SUPPORT, TOP, OUTER: 1 3/4 IN. OD, 1/8 IN. WALL 5-4-1103-2-9 (81337) | | EA | 1 | * | * | * | | * | * | | | 10 | 5 |
| PAOZZ | 8340-459-0498 | SUPPORT, TOP, SIDE: 1 3/4 IN. OD, 1/8 IN. WALL 5-4-1103-2-10 (81337) | | EA | 2 | * | * | * | | * | * | | | 10 | 6 |
| PAOZZ | 8340-459-0497 | SUPPORT, TOP, INNER: 1 1/4 SQ BAR 5-4-1103-2-8 (81337) | | EA | 1 | * | * | * | | * | * | | | 10 | 7 |
| | | GROUP 04 - TENT ACCESORIES | | | | | | | | | | | | | |
| XBOFF | | CARRYING CASE ASSEMBLY 5-4-1126-14 (81337) | | EA | 1 | | | | | | | | | 11 | |
| PAFZZ | 5340-290-0939 | BUCKLE, TONGUELESS | | EA | 10 | * | * | * | | * | * | | | 11 | 1 |
| PAOZZ | 5340-878-7029 | CLIP, END: 1 IN., BALL TYPE | | EA | 5 | * | * | * | | * | * | | | 11 | 2 |
| | | PART SIX - HIGH POWER ILLUMINATOR TENT, AFT | | | | | | | | | | | | | |
| | | GROUP 01 - TENT ANCHORING COMPONENTS | | | | | | | | | | | | | |
| PAOFF | 8340-119-1258 | TENT, HIGH POWER ILLUMINATOR, AFT ASSEMBLY 5-4-1129-1 (81337) | | EA | 1 | * | * | * | | * | * | | | 12 | |
| PAOZZ | 8340-205-2759 | SLIP, LINE TENT 5-4-1116-11 (81337) | | EA | 5 | * | * | * | | * | * | | | 12 | 1 |
| PAOZZ | 8340-823-7451 | PIN, TENT, STEEL: 12 IN. | | EA | 16 | * | * | * | | * | * | | | 12 | 2 |
| PAOZZ | 8340-261-9750 | PIN, TENT, WOOD: 16 IN. | | EA | 16 | * | * | * | | * | * | | | 12 | 3 |
| PAOZZ | 8340-252-2273 | LINE, GUY 5-4-1129-10 (81337) | | EA | 5 | * | * | * | | * | * | | | 12 | 4 |
| | | GROUP 02 - TENTPAGE | | | | | | | | | | | | | |
| MFOFZ | | BODY, TENT MANUFACTURE FROM: | | EA | 1 | | | | | | | | | 12 | 5 |
| PAFZZ | 8315-985-7450 | FASTENER, TAPE, PILE, REQUIRED | | PK | | * | * | * | | | | | | 12 | |
| MFFZZ | | TAB, EYELET MANUFACTURE FROM: | | EA | V | | | | | | | | | 12 | |
| PAFZZ | 9330-102-9880 | SHEET, PLASTIC, MILP22241, TYPE 1, 12 X 12 IN., AS REQUIRED | | SH | | * | * | * | | | | | | 12 | |

| SMR CODE | FEDERAL STOCK NUMBER | DESCRIPTION REF NUMBER & MFR CODE | USABLE ON CODE | UNIT OF MEAS | QTY INC IN UNIT | (6) 30-DAY DS MAINT ALLOWANCE | | | (7) 30-DAY GS MAINT ALLOWANCE | | | (8) 1-YR ALW PER 100 EQUIP CNTGY | (9) DEPOT MAINT ALW PER 100 EQUIP | (10) ILLUS-TRATION | |
|----------|----------------------|--|----------------|--------------|-----------------|-------------------------------|-------|--------|-------------------------------|-------|--------|----------------------------------|-----------------------------------|--------------------|---------|
| | | | | | | (A) | (B) | (C) | (A) | (B) | (C) | | | FIG NO | ITEM NO |
| MFFZZ | | TAPE, TITLE 5-4-1117-2-47 (81337) MANUFACTURE FROM: | | EA | V | 1-20 | 21-50 | 51-100 | 1-20 | 21-50 | 51-100 | | | 12 | |
| PAFZZ | 8315-253-6289 | TAPE, COTTON, TEXTILE, TYPE I, CLASS 4, 3/4 IN. OD, AS REQUIRED | | YD | | * | * | * | | | | | | 12 | |
| PAFZZ | 5325-231-6590 | GROMMET, METALLIC, NO. 2, AS REQUIRED | | EA | | * | * | * | | | | | | 12 | |
| PAOZZ | 5325-641-0295 | GROMMET, METALLIC, NO. 4, AS REQUIRED | | EA | | * | * | * | | | | | | 12 | |
| MFFZZ | | WINDOW ASSEMBLY 5-4-1121-5-5 (81337) MANUFACTURE FROM: | | EA | 1 | | | | | | | | | 12 | |
| PAFZZ | 8305-890-1569 | CLOTH, POLYESTER, AS REQUIRED | | YD | | * | * | * | | | | | | 12 | |
| PAFZZ | 5325-182-9646 | FASTENER, SLIDE, 1 EA REQUIRED 5-4-1120-5-20 (81337) | | EA | | * | * | * | | | | | | 12 | |
| PAFZZ | 8340-988-1300 | THREAD, POLYESTER, TYPE I, CLASS 1, SUB-CLASS B, SIZE F, 4 PLYES, AS REQUIRED | | SP | | * | * | * | | | | | | 12 | |
| PAOZZ | 8340-121-1320 | GROUP 03 - TENT SUPPORT COMPONENTS FRAME, TENT, HIGH POWER ILLUMINATOR, AFT 5-4-1103-3 (81337) | | EA | 1 | * | * | * | | | * | * | | 13 | |
| PAOZZ | 8340-459-0513 | PIN: 3/8 IN. DIA. 3 IN. LG 5-4-1105-3-5 (81337) | | EA | 2 | * | * | * | | | * | * | | 13 | 1 |
| MFFZZ | | CORD, SOLID BRAID 5-4-1103-5 (81337) MANUFACTURE FROM: | | EA | V | | | | | | | | | 13 | 2 |
| PAFZZ | 4020-180-6680 | CORD, POLYESTER, 1/8 IN. DIA, AS REQUIRED | | YD | | * | * | * | | | | | | 13 | |
| PAOZZ | 5310-989-5945 | NUT, HEXAGON: ADAPTER TO TRAILER MTG, 1/2-13 THD SIZE | | EA | 2 | * | * | * | | | * | * | | 13 | 3 |
| PAOZZ | 5310-595-6179 | WASHER, LOCK: ADAPTER TO TRAILER MTG, 1/2 IN. SCREW SIZE | | EA | 2 | * | * | * | | | * | * | | 13 | 4 |
| PAOZZ | 5305-021-3836 | SCREW, CAP, HEXAGON HEAD: ADAPTER TO TRAILER MTG, 1/2-13 X 3 1/2 IN. LG | | EA | 2 | * | * | * | | | * | * | | 13 | 5 |
| PAOZZ | 8340-459-0513 | PALLET ADAPTER ASSEMBLY 5-4-1103-3-1 (81337) | | EA | 2 | * | * | * | | | * | * | | 13 | 6 |
| PAOZZ | 8340-459-0515 | SUPPORT, TOP, OUTER: 1 3/4 IN. OD, 1/8 IN. WALL 5-4-1103-3-7 (81337) | | EA | 1 | * | * | * | | | * | * | | 13 | 7 |
| PAOZZ | 8340-459-0487 | SUPPORT, TOP, SIDE: 1 3/4 IN. OD, 1/8 IN. WALL 5-4-1103-3-8 (81337) | | EA | 2 | * | * | * | | | * | * | | 13 | |
| PAOZZ | 5305-088-8923 | SCREW, MACHINE: TRUSS HEAD, SLOTTED, 1/4-28 X 1 1/2 IN. LG | | EA | 5 | * | * | * | | | * | * | | 13 | 9 |
| PAOZZ | 8340-459-0514 | SUPPORT, TOP, INNER: 1 1/4 SQ BAR 5-4-1103-3-6 (81337) | | EA | 1 | * | * | * | | | * | * | | 13 | 10 |
| XBOFF | | GROUP 04 - TENT ACCESSORIES CARRYING CASE ASSEMBLY 5-4-1126-14 (81337) | | EA | 1 | | | | | | | | | 14 | |
| PAFZZ | 5340-290-0939 | BUCKLE, TONGUELESS | | EA | 10 | * | * | * | | | * | * | | 14 | 1 |
| PAOZZ | 8340-078-7029 | CLIP END: 1 IN., BALL TYPE | | EA | 5 | * | * | * | | | * | * | | 14 | 2 |

| SMR CODE | FEDERAL STOCK NUMBER | DESCRIPTION | USABLE ON CODE | UNIT OF MEAS | QTY INC IN UNIT | (6) 30-DAY DS MAINT ALLOWANCE | | | (7) 30-DAY GS MAINT ALLOWANCE | | | (8) 1-YR ALW PER 100 EQUIP CNTGY | (9) DEPOT MAINT ALW PER 100 EQUIP | (10) ILLUSTRATION | |
|----------|----------------------|---|----------------|--------------|-----------------|-------------------------------|-------|--------|-------------------------------|-------|--------|----------------------------------|-----------------------------------|-------------------|---------|
| | | | | | | (A) | (B) | (C) | (A) | (B) | (C) | | | (A) | (B) |
| | | REF NUMBER & MFR CODE | | | | 1-20 | 21-50 | 51-100 | 1-20 | 21-50 | 51-100 | | | FIG NO | ITEM NO |
| | | PART SEVEN - HAWK MISSILE COVER | | | | | | | | | | | | | |
| | | GROUP 05 - COVER | | | | | | | | | | | | | |
| MPFZZ | | HANDLE: NYLON, 11 1/2 IN. LG, NOSE SECTION MANUFACTURE FROM: | | EA | 2 | | | | | | | | | 15 | 1 |
| PAFZZ | 8305-261-8585 | WEBBING, AS REQUIRED | | YD | | * | * | * | | | | | | 15 | |
| MP0ZZ | | CHAPE: COTTON, DEE RING, 1 IN. W, WING SECTION SLIDE FASTENER FLAP TIE BACK, AND WING SECTION TIE DOWN MANUFACTURE FROM: | | EA | 5 | | | | | | | | | 15 | 2 |
| PAFZZ | 8305-260-2544 | WEBBING, AS REQUIRED | | YD | | * | * | * | | | | | | 15 | |
| PAFZZ | 5340-260-1414 | RING, DEE: BRASS OR BRONZE, 1 X .75 IN., CLASS 1, MIL SPEC R-3390, WING SECTION TIE DOWN | | PK | V | * | * | * | | * | * | | | 15 | 3 |
| MPFZZ | | HANDLE: NYLON, 11 1/2 IN. LG, INTERMEDIATE SECTION MANUFACTURE FROM: | | EA | 2 | | | | | | | | | 15 | 4 |
| PAFZZ | 8305-261-8585 | WEBBING, AS REQUIRED | | YD | | * | * | * | | | | | | 15 | |
| MPFZZ | | STRAP, SECURING, COVER: 56 IN. LG MANUFACTURE FROM: | | EA | 1 | | | | | | | | | 15 | 5 |
| PAFZZ | 5340-297-6619 | BUCKLE, AS REQUIRED | | EA | | * | * | * | | | | | | 15 | |
| PAFZZ | 5340-297-6833 | CLIP, AS REQUIRED | | EA | | * | * | * | | | | | | 15 | |
| PAFZZ | 8305-260-2544 | WEBBING, AS REQUIRED | | YD | | * | * | * | | | | | | 15 | |
| MPFZZ | | FLAP: SLIDE FASTENER, INTERMEDIATE SECTION SLIDE FASTENER MANUFACTURE FROM: | | EA | 1 | | | | | | | | | 15 | 6 |
| PAFZZ | 8305-890-1569 | CLOTH, AS REQUIRED | | YD | | * | * | * | | | | | | 15 | |
| PAFZZ | 8315-985-7450 | FASTENER TAPE, AS REQUIRED | | YD | | * | * | * | | | | | | 15 | |
| PAFZZ | 5325-282-6660 | FASTENER, SLIDE, INTERLOCKING: INTERMEDIATE SECTION, 24 IN. LG, TYPE 1, STYLE 2, SIZE H, FED SPEC V-F-106 | | EA | 1 | * | * | * | | * | * | | | 15 | 7 |
| MPFZZ | | CLOSURE: NYLON, HOOK AND PILE, 1 IN. W, INTERMEDIATE SECTION SLIDE FASTENER FLAP, 26 IN. LG MANUFACTURE FROM: | | EA | 1 | | | | | | | | | 15 | 8 |
| PAFZZ | 8315-985-7450 | FASTENER TAPE, AS REQUIRED | | YD | | * | * | * | | | | | | 15 | |
| MPFZZ | | CLOSURE: NYLON, HOOK AND PILE, 1 IN. W, WING SECTION SLIDE FASTENER FLAP, 3 3/4 IN. LG MANUFACTURE FROM: | | EA | 1 | | | | | | | | | 16 | 1 |
| PAFZZ | 8315-985-7450 | FASTENER TAPE, AS REQUIRED | | YD | | * | * | * | | | | | | 16 | |
| MPFZZ | | CLOSURE: NYLON HOOK AND PILE, 1 IN. W, WING SECTION SLIDE FASTENER FLAP, 6 FT, 3 1/8 IN. LG MANUFACTURE FROM: | | EA | 1 | | | | | | | | | 16 | 2 |
| PAFZZ | 8315-985-7450 | FASTENER TAPE, AS REQUIRED | | YD | | * | * | * | | | | | | 16 | |
| MPFZZ | | TAPE: TIE BACK, WING SECTION SLIDE FASTENER FLAP, TOP AND BOTTOM, 1 IN. W MANUFACTURE FROM: | | EA | 2 | | | | | | | | | 16 | 3 |
| PAFZZ | 8315-253-6290 | TAPE, AS REQUIRED | | EA | | * | * | * | | | | | | 16 | |

| SMR CODE | FEDERAL STOCK NUMBER | DESCRIPTION REF NUMBER & MFR CODE | USABLE ON CODE | UNIT OF MEAS | QTY INC IN UNIT | (6) 30-DAY DS MAINT ALLOWANCE | | | (7) 30-DAY GS MAINT ALLOWANCE | | | (8) 1-YR ALW PER 100 EQUIP CNTGY | (9) DEPOT MAINT ALW PER 100 EQUIP | (10) ILLUSTRATION | |
|----------|----------------------|--|----------------|--------------|-----------------|-------------------------------|-----|-----|-------------------------------|-----|-----|----------------------------------|-----------------------------------|-------------------|---------|
| | | | | | | (A) | (B) | (C) | (A) | (B) | (C) | | | FIG NO | ITEM NO |
| PAFZZ | 5325-276-9718 | FASTENER, SLIDE, INTERLOCKING: WING SECTION, TOP, 72 IN. LG, TYPE 1, STYLE 2, SIZE H, FED SPEC V-F-106 | | EA | 1 | * | * | * | | | | * | * | 16 | 4 |
| MFFZZ | | FLAP: SLIDE FASTENER, WING SECTION SLIDE FASTENER, TOP AND BOTTOM MANUFACTURE FROM: | | EA | 2 | | | | | | | | | 16 | 5 |
| PAFZZ | 8305-082-3056 | CLOTH, AS REQUIRED | | YD | | * | * | * | | | | | | 16 | |
| PAFZZ | 8315-985-7450 | FASTENER TAPE, AS REQUIRED | | YD | | * | * | * | | | | | | 16 | |
| MFFZZ | | THONG: SLIDE FASTNER MANUFACTURE FROM: | | EA | 5 | | | | | | | | | 16 | 6 |
| PAFZZ | 8315-262-2784 | BRAID, AS REQUIRED | | YD | | * | * | * | | | | | | 16 | |
| MFFZZ | | CLOSURE: NYLON, HOOK AND PILE, 1 IN. W, EXHAUST FLAP, 3 IN. LG AND EXHAUST FLAP, 5 IN. LG MANUFACTURE FROM: | | EA | 4 | | | | | | | | | 16 | 7 |
| PAFZZ | 8315-985-7450 | FASTENER TAPE, AS REQUIRED | | YD | | * | * | * | | | | | | 16 | |
| PAOZZ | 8340-996-4012 | STRAP, RUBBER, TARPULIN: WING SECTION TIE DOWN, 15 IN. LG | | EA | 2 | * | * | * | | | * | * | | 16 | 8 |
| PAOZZ | 8340-996-4009 | HOOK, S AND Z: STAINLESS STEEL, TIE DOWN STRAP TO WING SECTION DEE RING | | EA | 1 | * | * | * | | | * | * | | 16 | 9 |
| MFFZZ | | FLAP: EXHAUST OPENING, INTERMEDIATE SECTION MANUFACTURE FROM: | | EA | 1 | | | | | | | | | 16 | 10 |
| PAFZZ | 8305-082-3056 | CLOTH, AS REQUIRED | | YD | | * | * | * | | | | | | 16 | |
| PAFZZ | 8315-985-7450 | FASTENER TAPE, AS REQUIRED | | YD | | * | * | * | | | | | | 16 | |
| PAFZZ | 5325-174-9376 | FASTENER, SLIDE, INTERLOCKING: WING SECTION, SIDE, 36 IN. LG, TYPE 1, STYLE 2, SIZE H, FED SPEC V-F-106 | | EA | 2 | * | * | * | | | * | * | | 17 | 1 |
| MFFZZ | | SLEEVE: TARPULIN TIE DOWN STRAP MANUFACTURE FROM: | | EA | 5 | | | | | | | | | 17 | 2 |
| PAFZZ | 8305-082-3056 | CLOTH, AS REQUIRED | | YD | | * | * | * | | | | | | 17 | |
| PAFZZ | 5340-260-1414 | RING, DEE: BRASS OR BRONZE, 1 IN. X .75 IN., CLASS 1, MIL SPEC R-3390, THRUST END SECTION TIE DOWN, WING SECTION TIE DOWN | | PK | V | * | * | * | | | * | * | | 17 | 3 |
| PAOZZ | 8340-953-9136 | HOOK, S AND Z: STAINLESS STEEL, TIE BACK TAPE, WING SECTION SLIDE FASTENER FLAP, TOP AND BOTTOM, TIE DOWN STRAP TO THRUST END SECTION DEE RING | | EA | 7 | * | * | * | | | * | * | | 17 | 4 |
| PAOZZ | 8340-996-4009 | HOOK, S AND Z: STAINLESS STEEL, SLIDE FASTENER THONG, AND TIE DOWN STRAP TO THRUST END SECTION DEE RING | | EA | 3 | * | * | * | | | * | * | | 17 | 5 |
| MFFZZ | | CHAPE: COTTON, DEE RING, 1 IN. W, THRUST END SECTION TIE DOWN MANUFACTURE FROM: | | EA | 5 | | | | | | | | | 17 | 6 |
| PAFZZ | 8305-890-1569 | WEBBING, AS REQUIRED | | YD | | * | * | * | | | | | | 17 | |
| PAOFZ | 8340-953-9138 | STRAP, RUBBER, TARPULIN: WING SECTION TIE DOWN, 20 IN. LG | | EA | 5 | * | * | * | | | * | * | | 17 | 7 |
| PAFZZ | 5325-985-6530 | FASTENER, SLIDE, INTERLOCKING: WING SECTION, BOTTOM, 54 IN. LG, TYPE IV, STYLE 12, SIZE H, FED SPEC V-F-106 | | EA | 1 | * | * | * | | | * | * | | | |

| SMR CODE | FEDERAL STOCK NUMBER | DESCRIPTION | USABLE ON CODE | UNIT OF MEAS | QTY INC IN UNIT | (6) 30-DAY DS MAINT ALLOWANCE | | | (7) 30-DAY GS MAINT ALLOWANCE | | | (8) 1-YR ALW PER 100 EQUIP CNTGY | (9) DEPOT MAINT ALW PER 100 EQUIP | (10) ILLUSTRATION | | |
|----------|----------------------|---|----------------|--------------|-----------------|-------------------------------|-----|-----|-------------------------------|-----|-----|----------------------------------|-----------------------------------|-------------------|-----|--|
| | | | | | | (A) | (B) | (C) | (A) | (B) | (C) | | | (A) | (B) | |
| PAOZZ | 5325-639-8109 | GROMMET, METALLIC: BRASS, BLACK CHEMICAL FINISH, NO. 1, TYPE III, CLASS 3, MIL SPEC G-16491, INTERMEDIATE SECTION DRAIN, THRUST END SECTION DRAIN | | EA | 7 | * | * | * | | | * | * | | | | |
| PAOZZ | 8340-953-9137 | HOOK Z: SLEEVE STRAP TO TIE DOWN STRAP, STAINLESS STEEL, 3/16 IN. DIA X 2 IN. LG | | EA | 5 | * | * | * | | | * | * | | | | |
| MPFZZ | | PADDING: THRUST END SECTION MANUFACTURE FROM: | | EA | 1 | | | | | | | | | | | |
| PAFZZ | 8305-082-3056 | CLOTH, GREEN, TRILOCK OLEFIN, HEAT SET, AS REQUIRED | | YD | | * | * | * | | | | | | | | |
| MPFZZ | | PADDING: WING EDGE MANUFACTURE FROM: | | EA | 4 | | | | | | | | | | | |
| PAFZZ | 8305-082-3056 | CLOTH, GREEN, TRILOCK OLEFIN HEAT SET, AS REQUIRED | | YD | | * | * | * | | | | | | | | |
| PAFZZ | 8305-082-3056 | CLOTH, AS REQUIRED | | YD | | * | * | * | | | | | | | | |
| MPFZZ | | REINFORCEMENT: POLYESTER EXHAUST OPENING, 4 3/4 X 5 IN., SLEEVE STRAP, 3 X 4 1/4 IN. MANUFACTURE FROM: | | EA | 2 | | | | | | | | | | | |
| PAFZZ | 8305-082-3056 | CLOTH, AS REQUIRED | | YD | | * | * | * | | | | | | | | |
| PAOZZ | 5340-264-1221 | RING, CONNECTION, ROUND: SLIDE FASTENER THONG, MALLEABLE IRON, GALVANIZED, TYPE I, CLASS A, 1/2 IN., MIL SPEC R-1482 | | EA | 1 | * | * | * | | | * | * | | | | |
| MPFZZ | | STIFFENER: 7/32 IN. DIA, INTERMEDIATE SECTION, WING SECTION, AND WING SECTION SLIDE FASTENER WELT, 12 FT LG MANUFACTURE FROM: | | EA | 4 | | | | | | | | | | | |
| PAFZZ | 4020-233-6561 | CORD, AS REQUIRED | | LB | | * | * | * | | | | | | | | |
| MPFZZ | | STRAP: SLEEVE, WING SECTION, COTTON, 1 IN. W, BOTTOM, SIDE AND TOP MANUFACTURE FROM: | | EA | 5 | | | | | | | | | | | |
| PAFZZ | 8305-260-2544 | WEBBING, AS REQUIRED | | YD | | * | * | * | | | | | | | | |
| PAFZZ | 8310-988-1298 | THREAD, POLYESTER: OLIVE DRAB, TICKET NO. E | | SP | V | * | * | * | | | * | * | | | | |
| PAFZZ | 8310-988-1300 | THREAD, POLYESTER: OLIVE DRAB, TICKET NO. F | | SP | | * | * | * | | | * | * | | | | |
| MPFZZ | | WELT: CORD, SLIDE FASTENER, 12 FT, 8 IN. LG MANUFACTURE FROM: | | EA | 1 | | | | | | | | | | | |
| PAFZZ | 8305-082-3056 | CLOTH, AS REQUIRED | | YD | | * | * | * | | | | | | | | |
| PAOZZ | 8340-973-4430 | REPAIR KIT, HAWK MISSILE COVER | | EA | V | * | * | * | | | * | * | | | | |
| | | 5-SCOURING | | | | | | | | | | | | | | |
| | | 12-ADHESIVE | | | | | | | | | | | | | | |
| | | 2-BRUSH | | | | | | | | | | | | | | |
| | | 2-CLOTH | | | | | | | | | | | | | | |
| | | 1-ROLLER | | | | | | | | | | | | | | |
| | | 1-SHEARS | | | | | | | | | | | | | | |
| | | 1-TOLUENE | | | | | | | | | | | | | | |



ME 8340-203-23P/1

Figure 1. Tentage and anchoring components, missile maintenance test shop tent.

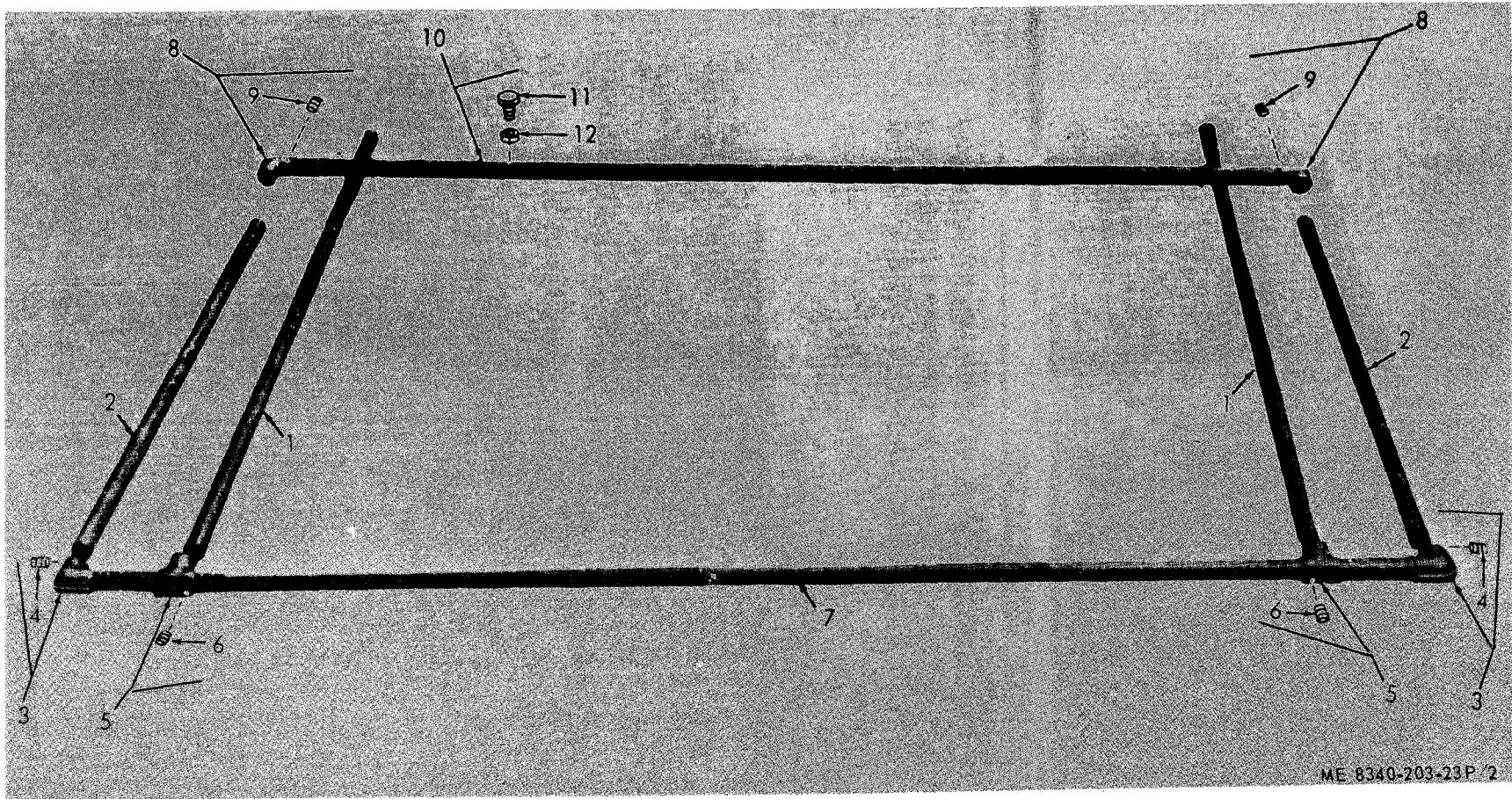
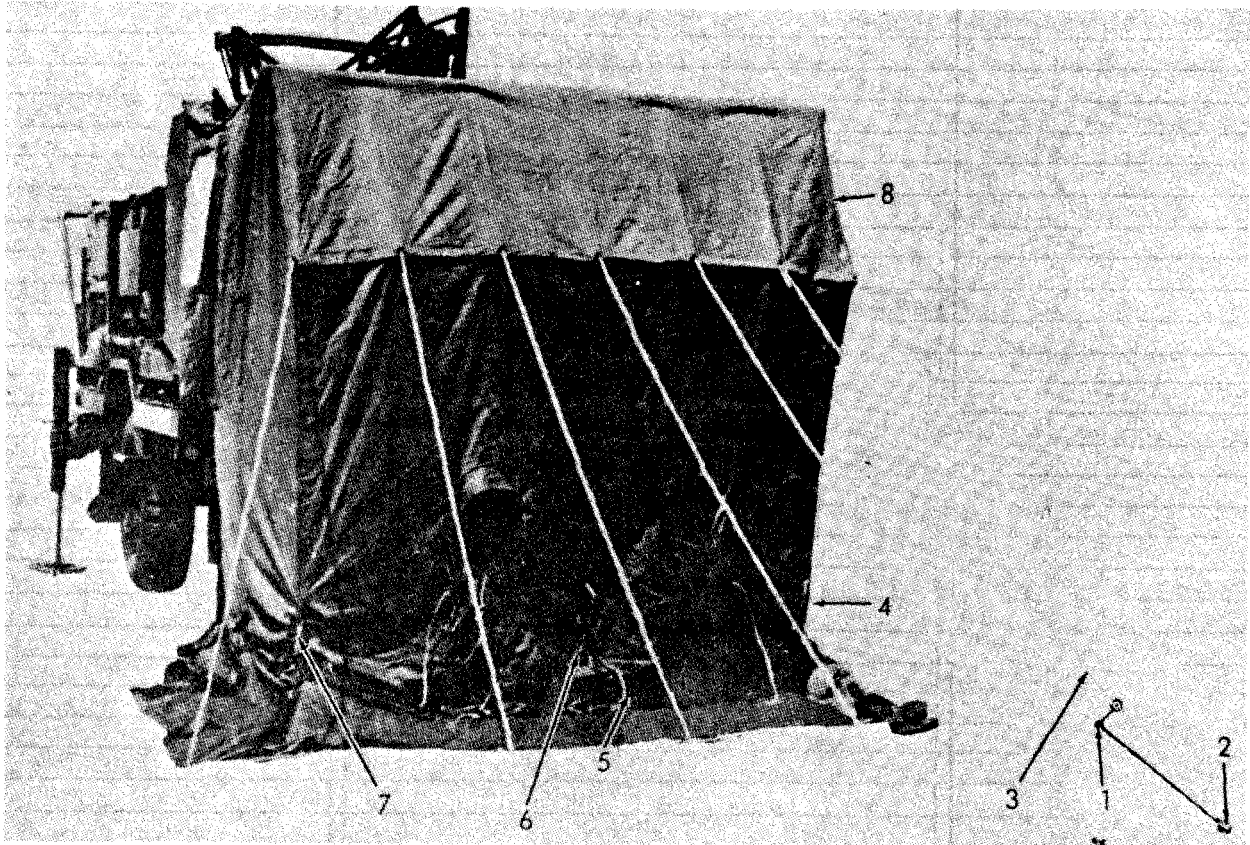
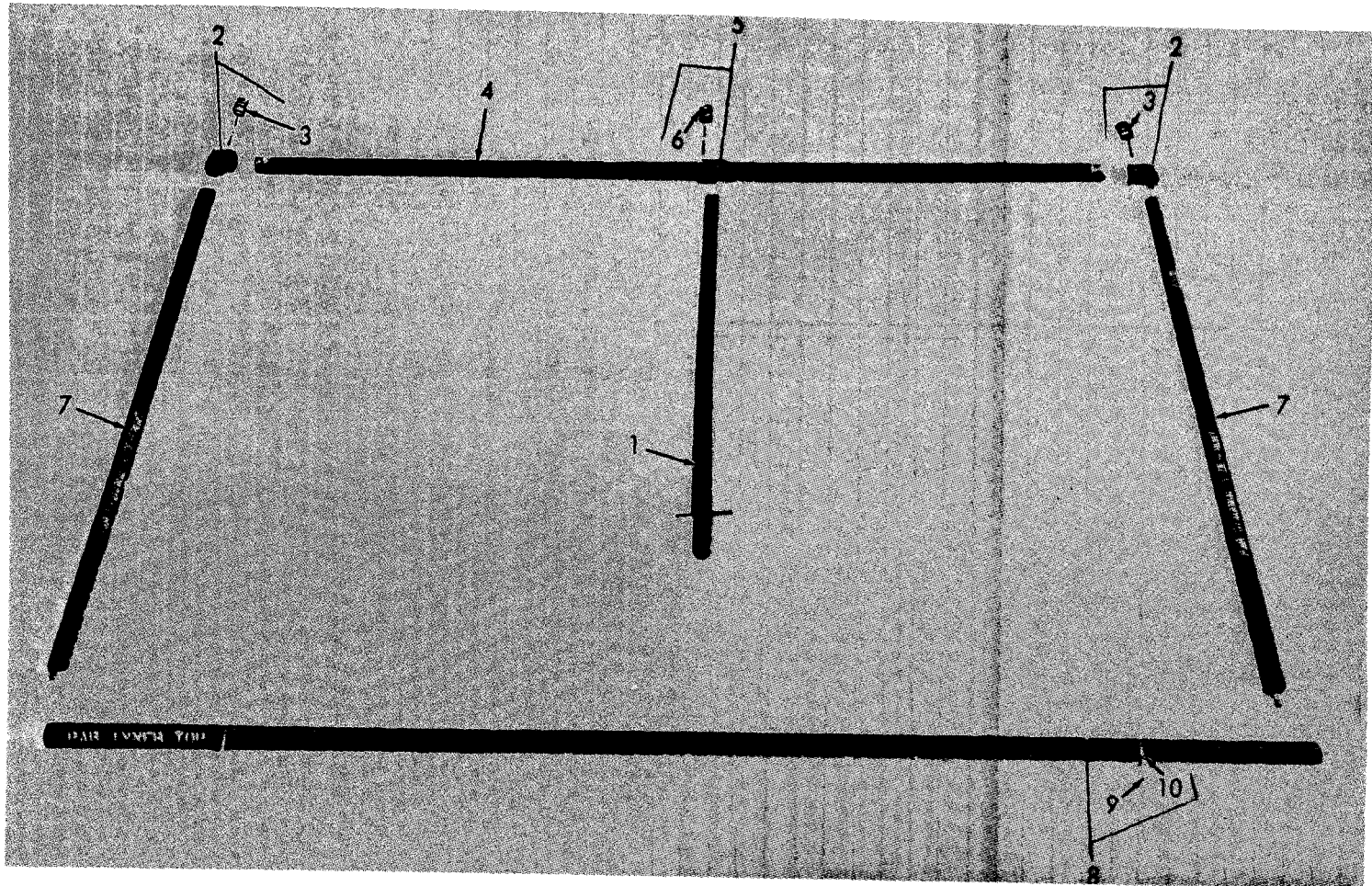


Figure 2. Frame, missile maintenance test shop tent.



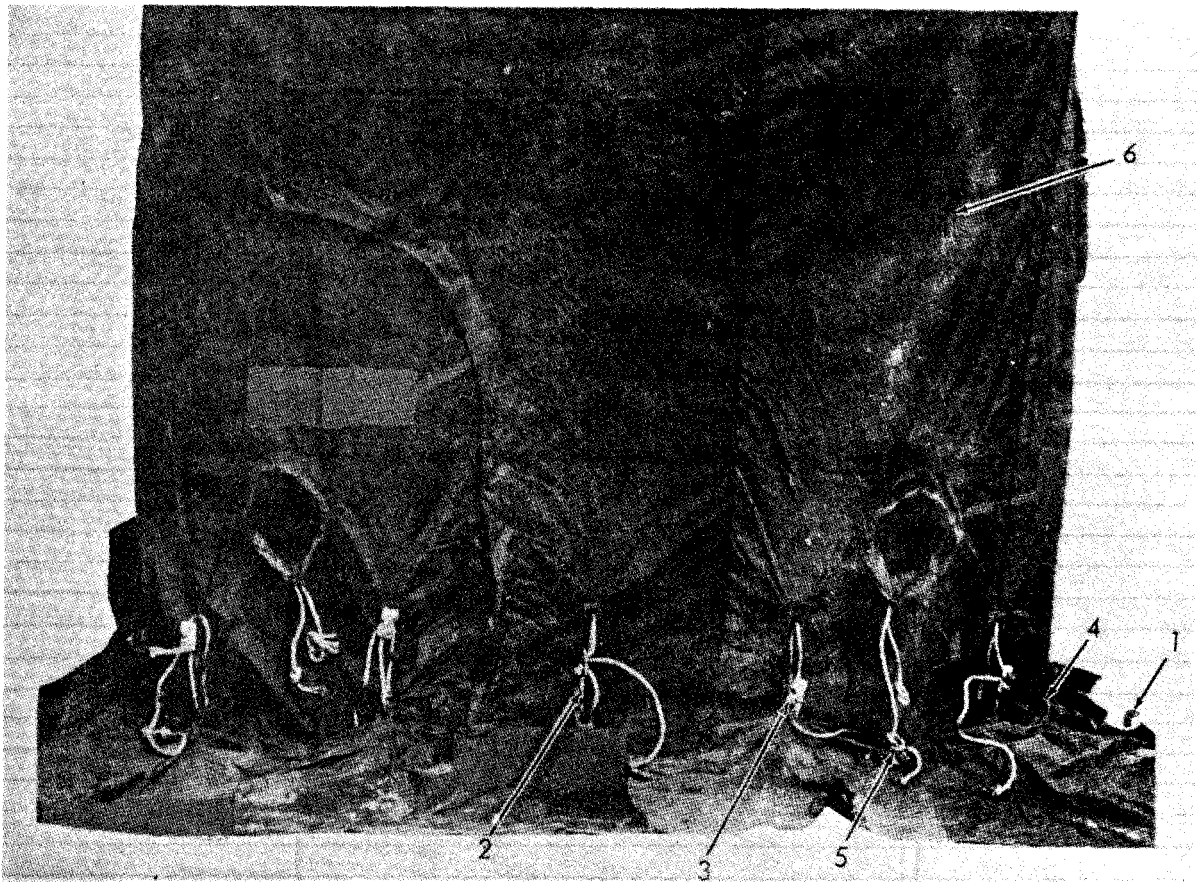
ME 8340-203-23P/3

Figure 3. Tentage and anchoring components, pulse acquisition radar tent (front).



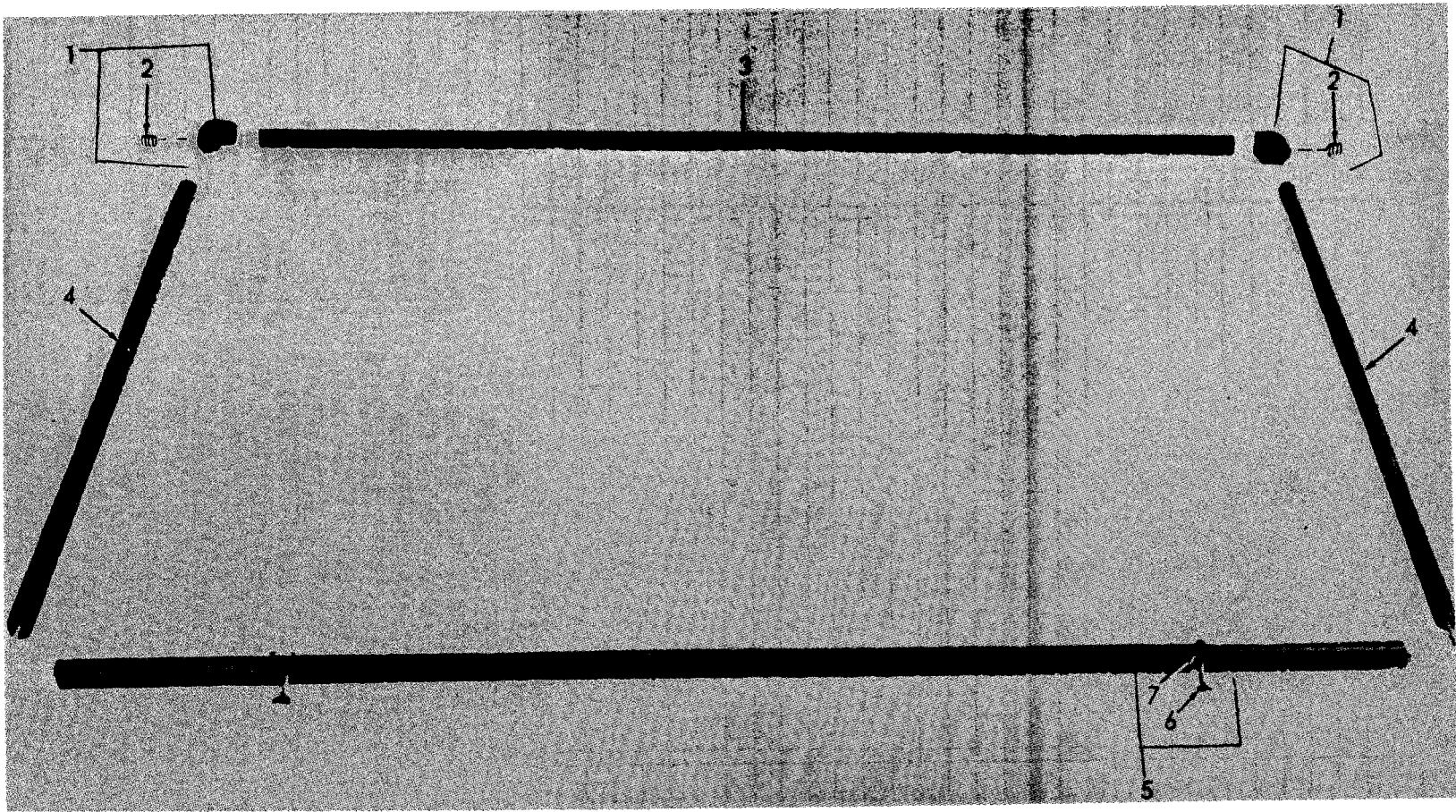
ME 8340-203-23P/4

Figure 4. Frame, pulse acquisition radar tent (front).



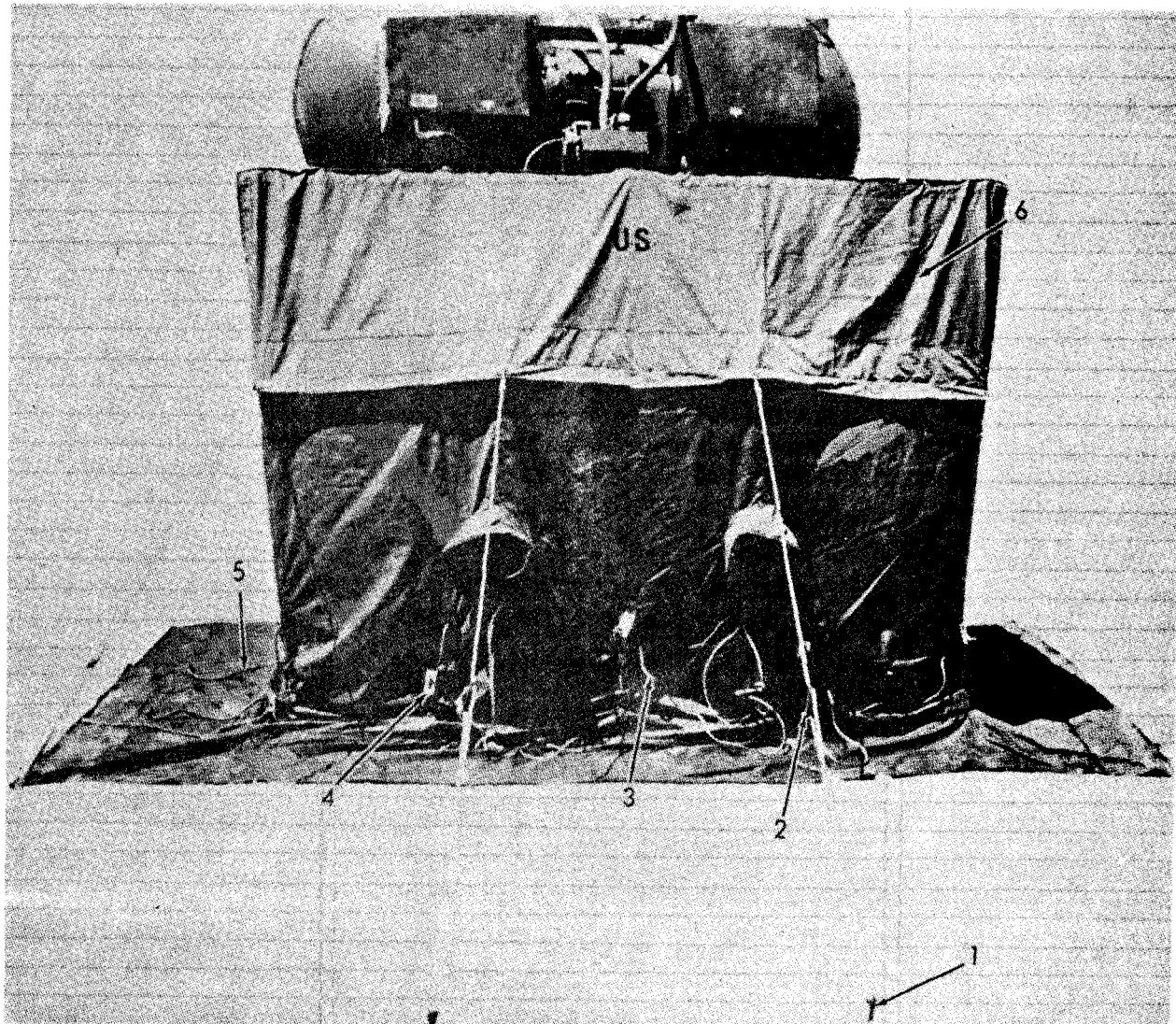
ME 8340-203-23P/5

Figure 5. Tentage and anchoring components, pulse acquisition radar tent (aft).



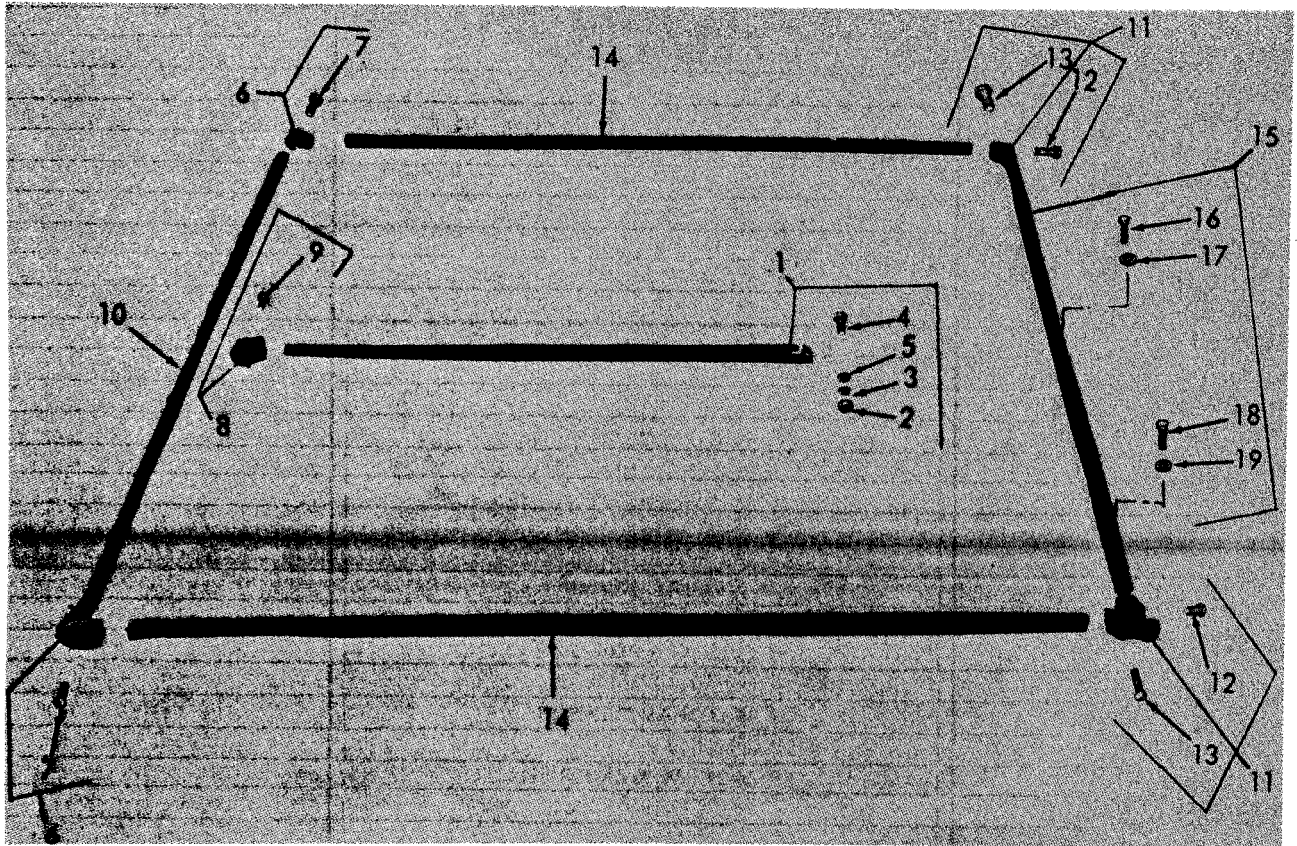
ME 8340-203-23P/6

Figure 6. Frame, pulse acquisition radar tent (aft).



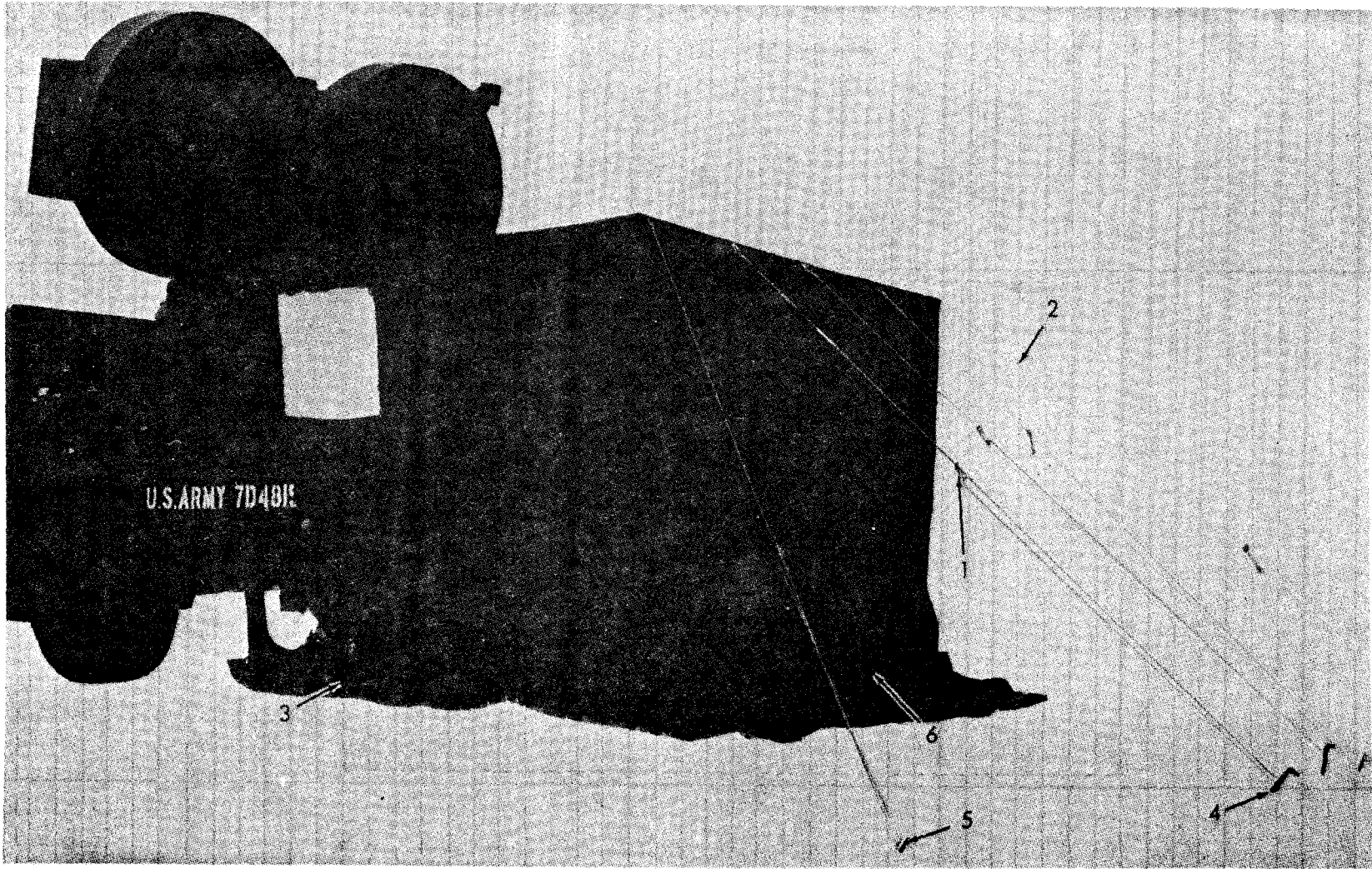
ME 8340-203-23P/7

Figure 7. Tentage and anchoring components; range only, CW acquisition, and CW illuminator radar tent.



ME 8340-203-23P/8

Figure 8. Frame; range only, CW acquisition, and CW illuminator radar tent.



ME 8340-203-23P/9

Figure 9. Tentage and anchoring components, high power illuminator tent (front).

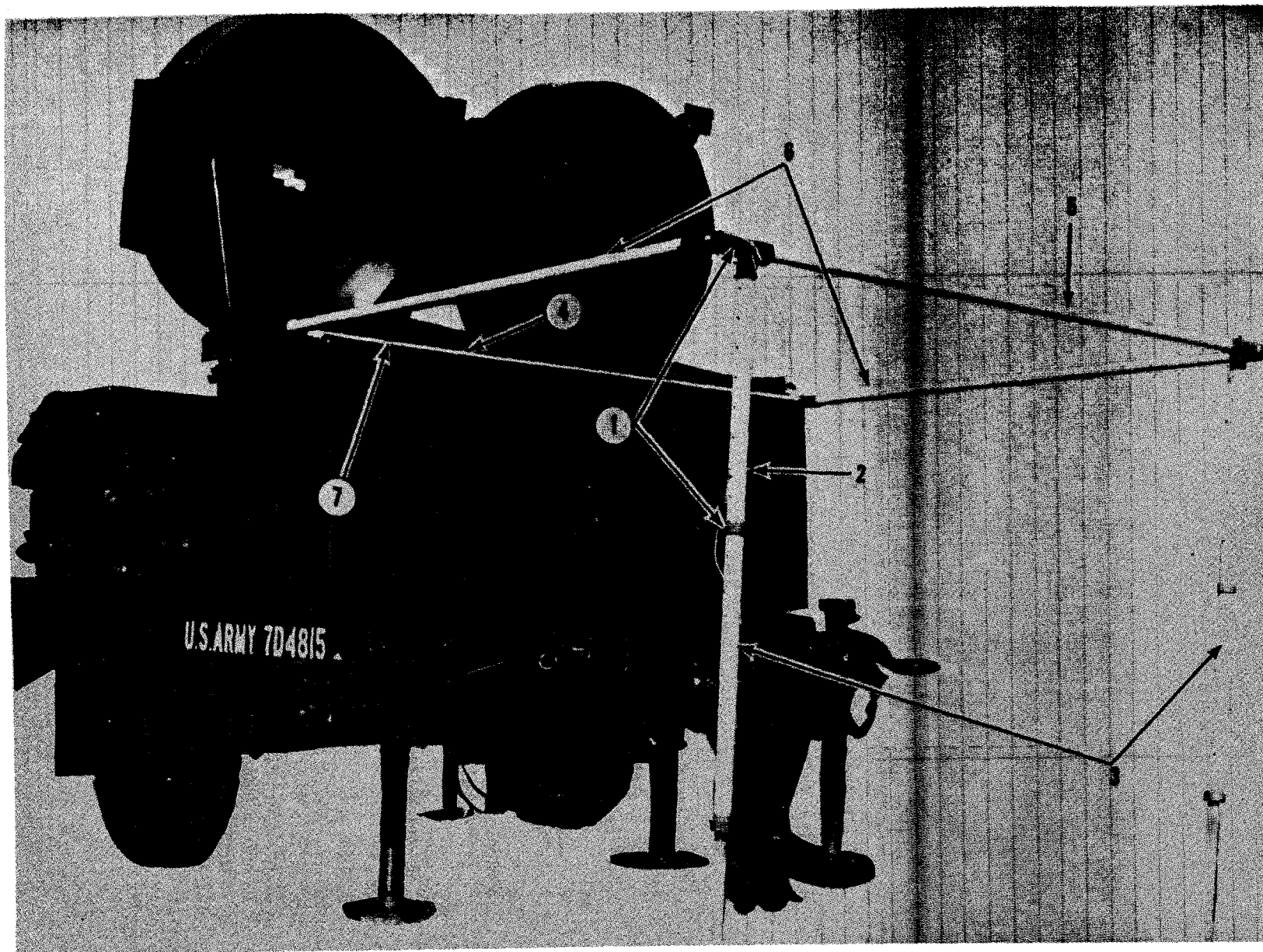
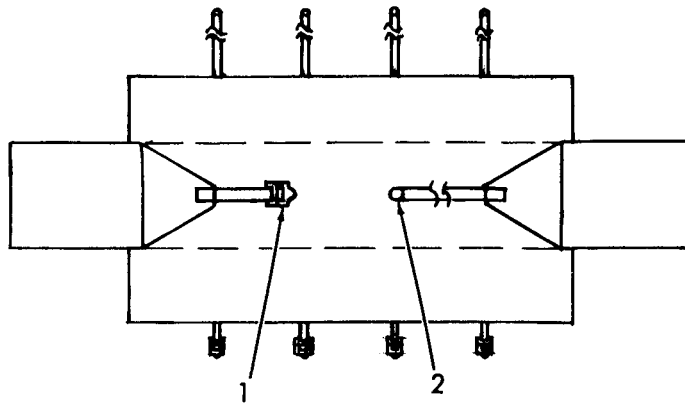


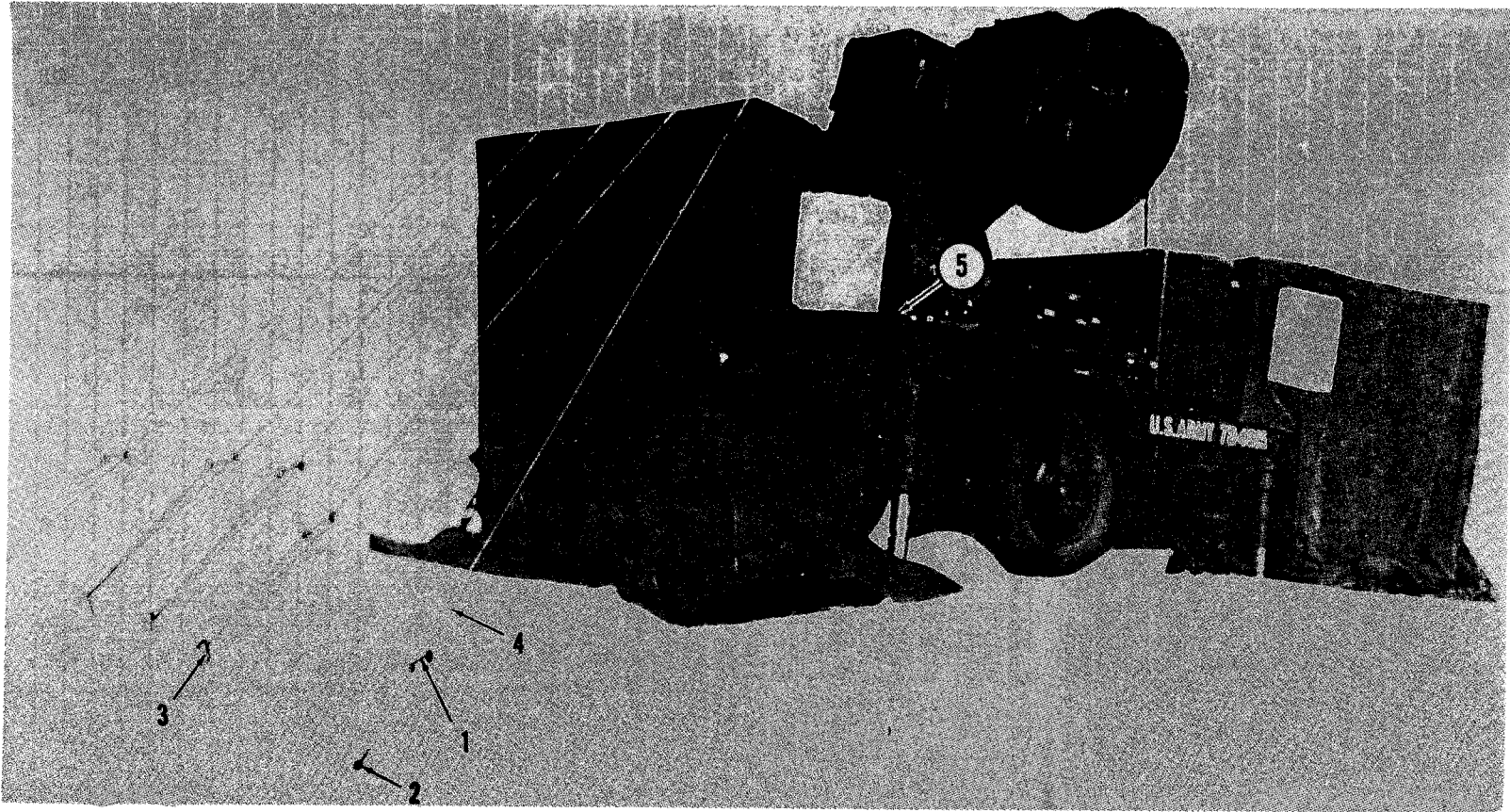
Figure 10. Frame, high power illuminator tent (front).

ME 8340-203-23P/10



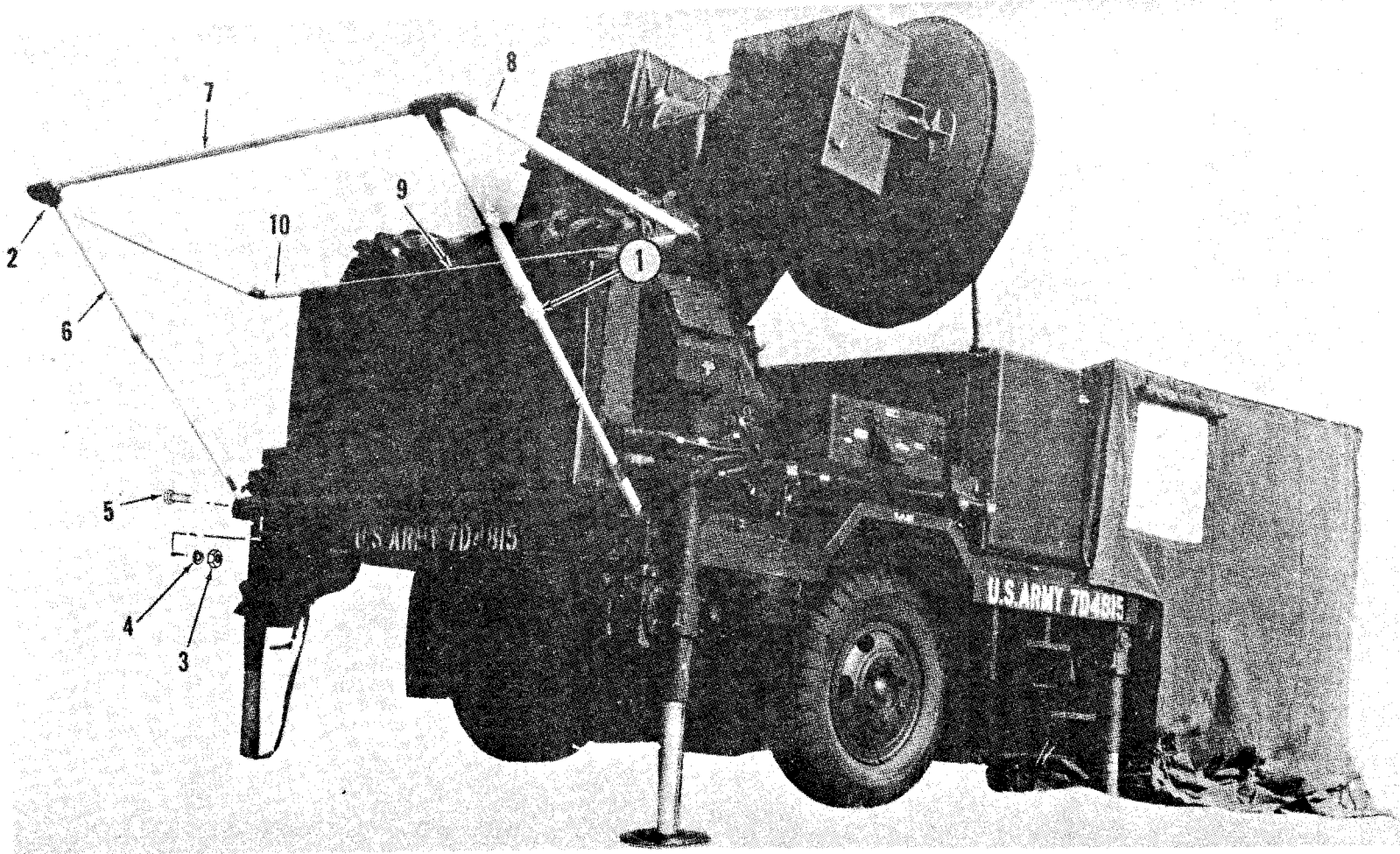
ME 8340-203-23P/11

Figure 11. Carving case, high power illuminator tent (front).



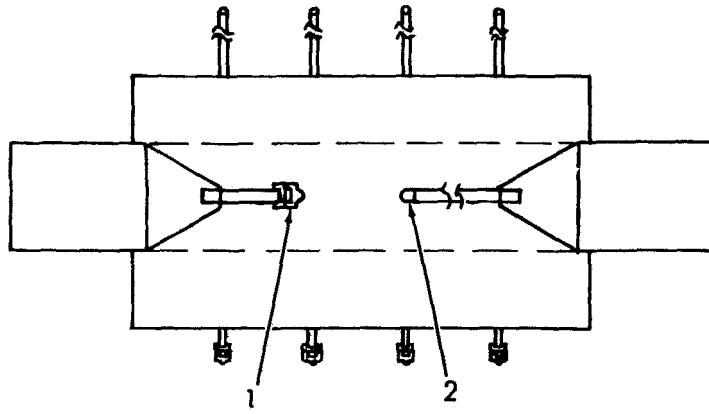
ME 8340-203-23P/12

Figure 12. Tentage and anchoring components, high power illuminator tent (aft).



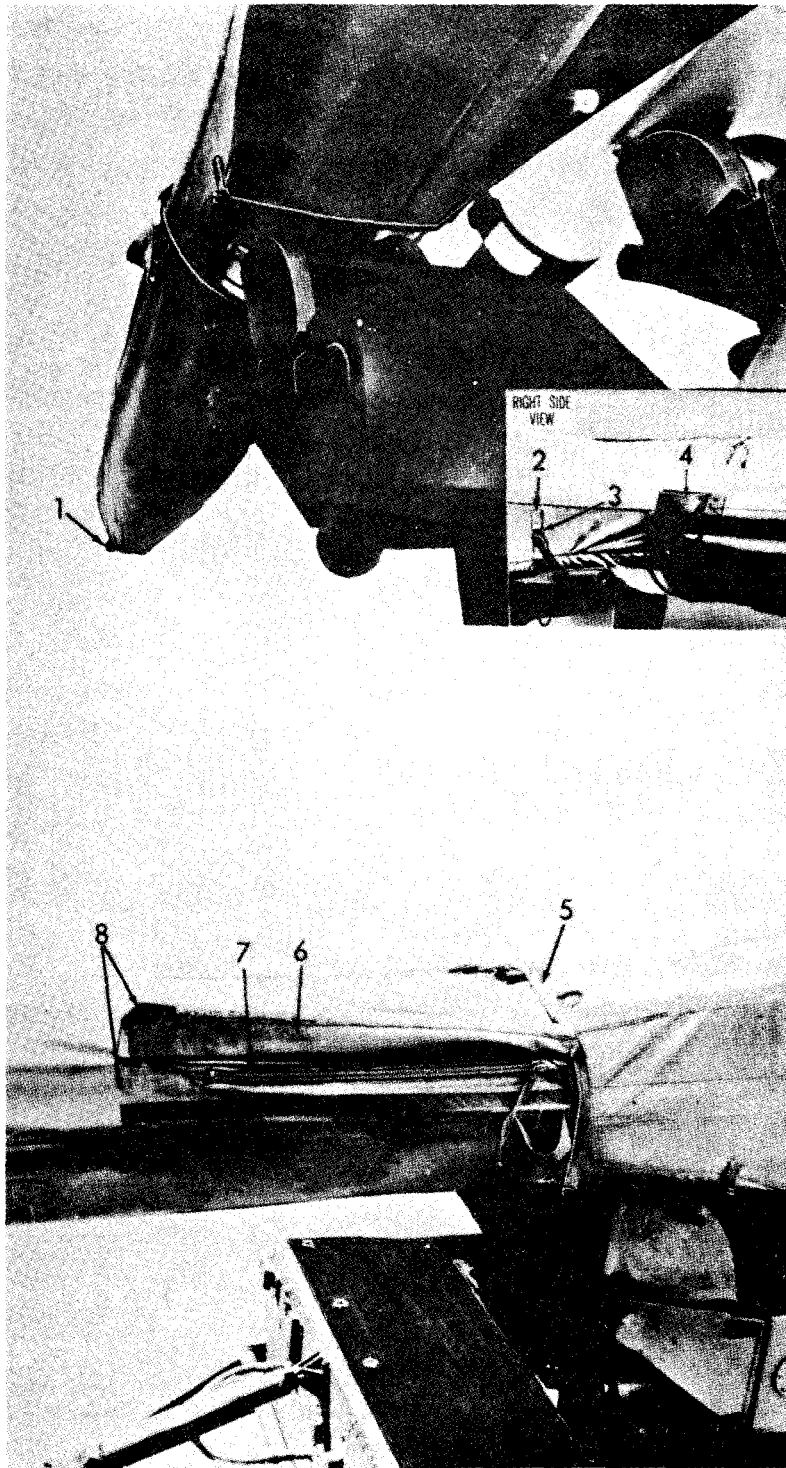
ME 8340-203-23P/13

Figure 13. Frame, high power illuminator tent (aft).



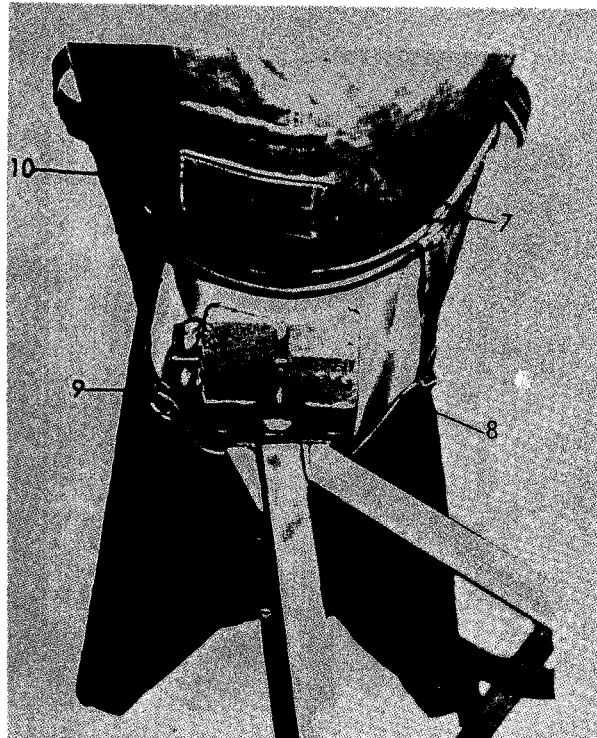
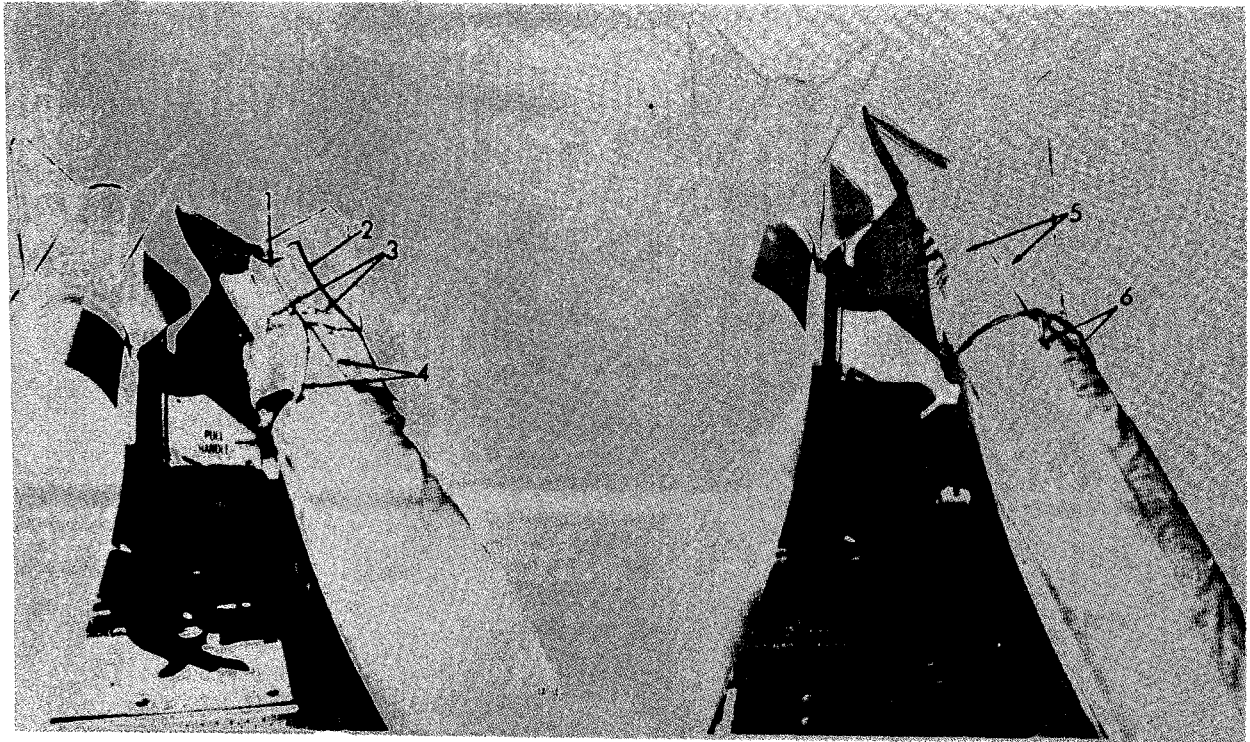
ME 8340-203-23P/14

Figure 14. Carrying case, high power illuminator tent (aft).



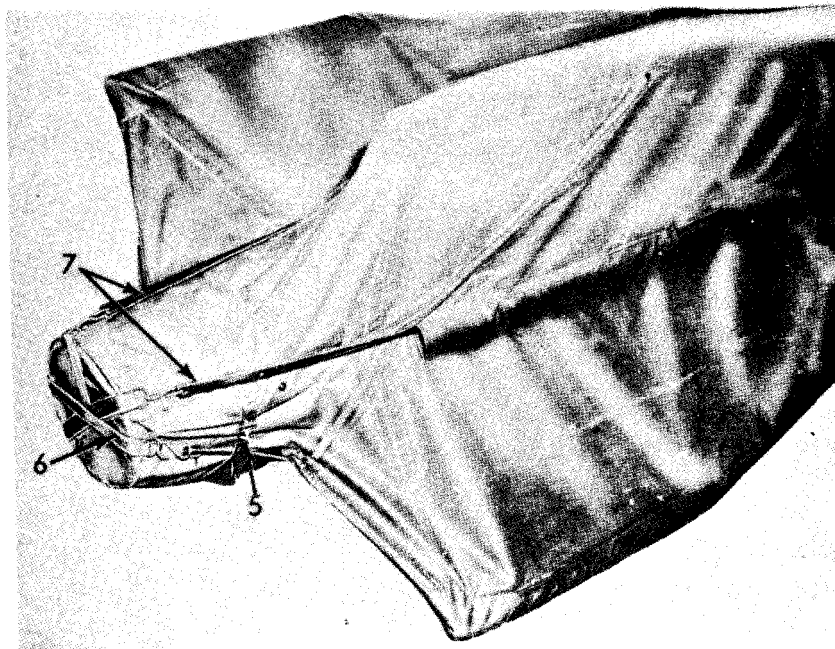
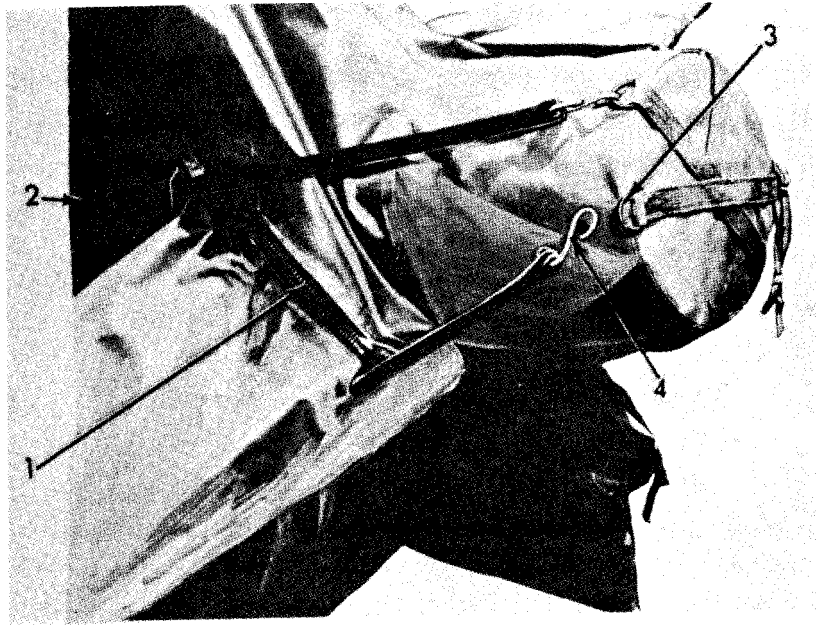
ME 8340-203-23P/15

Figure 15. Hawk missile cover, nose and intermediate section.



ME 8340-203-23P/16

Figure 16. Hawk missile cover, intermediate and wing section, top and bottom view.



ME 8340-203-23P/17

Figure 17. Hawk missile cover, wing and thrust end section.

SECTION VII. INDEX-FEDERAL STOCK NUMBER AND REFERENCE NUMBER

| STOCK NUMBER | CROSS-REFERENCE TO FIGURE AND ITEM NUMBER | | STOCK NUMBER | FIGURE NO | ITEM NO |
|---------------|---|---------|---------------|-----------|---------|
| | FIGURE NO | ITEM NO | | | |
| 4020-180-6680 | 10 | | 5325-641-0295 | 12 | |
| | 13 | | 5325-972-5271 | 3 | |
| 4020-231-9021 | 1 | | | 5 | |
| | 3 | | | 7 | |
| | 5 | | 5340-260-1414 | 15 | 3 |
| | 7 | | | 17 | 3 |
| 4710-542-2906 | 2 | | 5340-290-0939 | 11 | 1 |
| | 2 | | | 14 | 1 |
| | 2 | | 5340-297-6619 | 15 | |
| | 4 | | 5340-297-6833 | 15 | |
| | 4 | | 5340-828-4765 | 8 | 17 |
| | 4 | | 5340-878-7029 | 11 | 2 |
| | 6 | | 5530-262-8180 | 1 | |
| | 6 | | | 3 | |
| | 8 | | | 5 | |
| | 8 | | | 7 | |
| 5235-231-6622 | 1 | | 5670-989-2611 | 2 | 3 |
| 5235-290-5933 | 1 | | | 2 | 8 |
| 5305-012-4058 | 8 | | | 4 | 2 |
| 5305-021-3836 | 13 | 5 | | 4 | 1 |
| 5305-088-8923 | 10 | 4 | | 8 | 6 |
| | 13 | 9 | | 8 | 11 |
| 5305-207-8253 | 8 | 4 | 5670-989-2612 | 2 | 5 |
| 5305-267-8982 | 2 | | | 4 | 5 |
| 5305-685-3511 | 8 | | | 8 | 8 |
| 5305-724-6810 | 2 | 4 | 8305-082-3056 | 16 | |
| | 2 | 6 | | 17 | |
| | 2 | 9 | 8305-260-2544 | 15 | |
| | 4 | 3 | 8305-261-8585 | 15 | |
| | 4 | 6 | 8305-261-8797 | 1 | |
| 5305-815-5514 | 4 | | | 3 | |
| | 6 | | | 5 | |
| 5305-984-5687 | 8 | 9 | | 7 | |
| | 8 | 12 | 8305-826-6171 | 9 | |
| 5305-984-5689 | 8 | 7 | 8305-890-1569 | 1 | |
| | 8 | 13 | | 3 | |
| 5305-989-5843 | 6 | 2 | | 5 | |
| 5310-042-6758 | 8 | 3 | | 7 | |
| 5310-582-5677 | 2 | 12 | | 9 | |
| | 8 | 5 | | 12 | |
| | 8 | 19 | | 15 | |
| 5310-595-6179 | 13 | 4 | | 17 | |
| 5310-767-9425 | 4 | 10 | 8310-823-6888 | 3 | |
| | 6 | 7 | 8310-988-1299 | 5 | |
| 5310-903-5966 | 8 | 2 | | 7 | |
| 5310-989-5945 | 13 | 3 | 8310-988-1300 | 9 | |
| 5315-846-8337 | 4 | | 8315-253-6289 | 7 | |
| | 6 | | | 9 | |
| 5325-025-3038 | 1 | | | 12 | |
| | 3 | | 8315-253-6290 | 16 | |
| | 5 | | 8315-253-6293 | 9 | |
| | 7 | | 8315-262-2784 | 7 | |
| 5325-072-5271 | 1 | | | 16 | |
| 5325-174-9014 | 1 | | 8315-262-2785 | 1 | |
| | 5 | | | 3 | |
| | 7 | | | 5 | |
| 5325-174-9016 | 3 | | 8315-985-7450 | 9 | |
| 5325-174-9057 | 1 | | | 12 | |
| | 3 | | | 15 | |
| | 5 | | | 16 | |
| | 7 | | 8340-078-7029 | 14 | 2 |
| 5325-174-9067 | 7 | | 8340-119-1257 | 9 | |
| 5325-174-9376 | 17 | 1 | 8340-119-1258 | 12 | |
| 5325-174-9424 | 3 | | 8340-121-1318 | 10 | |
| 5325-182-9646 | 9 | | 8340-121-1320 | 13 | |
| | 12 | | 8340-205-2759 | 3 | 1 |
| 5325-231-6590 | 9 | | | 7 | 2 |
| | 12 | | | 9 | 1 |
| 5325-231-6622 | 3 | | | 12 | 1 |
| | 5 | | 8340-252-2269 | 9 | 3 |
| | 7 | | 8340-252-2273 | 9 | 2 |
| 5325-276-9718 | 16 | 4 | | 12 | 4 |
| 5325-282-6660 | 15 | 7 | 8340-252-2299 | 1 | 5 |
| 5325-286-9554 | 7 | | | 3 | 4 |
| 5325-290-5933 | 3 | | | 5 | 4 |
| | 5 | | | 7 | 5 |
| | 7 | | 8340-261-9750 | 9 | 5 |
| 5325-292-5340 | 1 | | | 12 | 3 |
| | 3 | | 8340-459-0487 | 13 | 8 |
| | 5 | | 8340-459-0497 | 10 | 7 |
| | 7 | | 8340-459-0498 | 10 | 6 |
| 5325-641-0295 | 9 | | 8340-459-0509 | 10 | 3 |

SECTION VII. INDEX-FEDERAL STOCK NUMBER AND REFERENCE NUMBER
 CROSS-REFERENCE TO FIGURE AND ITEM NUMBER

| STOCK NUMBER | FIGURE NO. | ITEM NO. |
|---------------|---------------|-------------|
| 8340-459-0513 | 10 | 2 |
| | 13 | 1 |
| | 13 | 6 |
| 8340-459-0514 | 13 | 10 |
| 8340-459-0515 | 13 | 7 |
| 8340-459-0538 | 10 | 5 |
| 8340-823-7451 | 1 | 1 |
| | 3 | 2 |
| | 5 | 1 |
| | 7 | 1 |
| | 9 | 4 |
| | 12 | 2 |
| | 17 | 4 |
| 8340-953-9136 | 17 | 4 |
| 8340-953-9138 | 17 | 7 |
| 8340-973-2267 | 4 | |
| | 6 | |
| 8340-973-2268 | 2 | 10 |
| 8340-973-2269 | 8 | 1 |
| 8340-973-2270 | 4 | 8 |
| | 6 | 5 |
| 8340-973-2271 | 8 | 15 |
| 8340-988-1300 | 12 | |
| 8340-996-4009 | 16 | 9 |
| | 17 | 5 |
| | 17 | 8 |
| 8340-996-4012 | 16 | |
| 9330-102-9880 | 9 | |
| | 12 | |
| 9510-684-6052 | 4 | |

SECTION VII. INDEX-FEDERAL STOCK NUMBER AND REFERENCE NUMBER
 CROSS-REFERENCE TO FIGURE AND ITEM NUMBER

| REFERENCE NO | MFR CODE | FIG NO | ITEM NO | REFERENCE NO | MFR CODE | FIG NO | ITEM NO |
|----------------|----------|--------|---------|---------------|----------|--------|---------|
| AN227-8B9B | 00000 | 3 | | 514-713 | 81337 | 5 | |
| | 88044 | 1 | | 538214 | 00000 | 7 | |
| | 88044 | 5 | | 538220 | 00000 | 1 | |
| AN277-8B9B | 88044 | 7 | | | 00000 | 3 | |
| A867WITHWASHER | 57771 | 1 | | | 00000 | 5 | |
| | 57771 | 3 | | | 00000 | 7 | |
| | 57771 | 5 | | 538229 | 00000 | 1 | |
| | 57771 | 7 | | | 00000 | 5 | |
| BS78403 | 61864 | 1 | | | 00000 | 7 | |
| | 61864 | 3 | | 538230 | 00000 | 3 | |
| | 61864 | 5 | | 538637 | 00000 | 3 | |
| BX78403 | 61864 | 7 | | 8460200 | 00000 | 1 | |
| MILF21840 | 00000 | 9 | | | 00000 | 3 | |
| MS16633-4021 | 96906 | 8 | 17 | | 00000 | 5 | |
| 3-1 | 00403 | 2 | 3 | | 00000 | 7 | |
| | 00403 | 2 | 8 | | | | |
| | 00403 | 4 | 2 | | | | |
| | 00403 | 6 | 1 | | | | |
| | 00403 | 8 | 6 | | | | |
| | 00403 | 8 | 11 | | | | |
| 5-1 | 00403 | 2 | 5 | | | | |
| | 00403 | 4 | 5 | | | | |
| | 00403 | 8 | 8 | | | | |
| 5-4-1103-2 | 81337 | 10 | | | | | |
| 5-4-1103-2-1 | 81337 | 10 | 3 | | | | |
| 5-4-1103-2-10 | 81337 | 10 | 6 | | | | |
| 5-4-1103-2-16 | 81337 | 10 | 4 | | | | |
| 5-4-1103-2-8 | 81337 | 10 | 7 | | | | |
| 5-4-1103-2-9 | 81337 | 10 | 5 | | | | |
| 5-4-1103-3 | 81337 | 13 | | | | | |
| 5-4-1103-3-1 | 81337 | 13 | 6 | | | | |
| 5-4-1103-3-6 | 81337 | 13 | 10 | | | | |
| 5-4-1103-3-7 | 81337 | 13 | 7 | | | | |
| 5-4-1103-3-8 | 81337 | 13 | 8 | | | | |
| 5-4-1103-5 | 81337 | 10 | 1 | | | | |
| | 81337 | 13 | 2 | | | | |
| 5-4-1105-3-5 | 81337 | 10 | 2 | | | | |
| | 81337 | 13 | 1 | | | | |
| 5-4-1116 | 81337 | 9 | | | | | |
| 5-4-1116-11 | 81337 | 9 | 1 | | | | |
| | 81337 | 12 | 1 | | | | |
| 5-4-1117-2-20 | 81337 | 9 | | 5-4-1117-2-27 | | | |
| 5-1-1117-2-27 | 81337 | 9 | | | | | |
| 5-4-1117-2-4 | 81337 | 9 | 3 | | | | |
| 5-4-1117-2-43 | 81337 | 9 | | | | | |
| 5-4-1117-2-47 | 81337 | 9 | | | | | |
| | 81337 | 12 | | | | | |
| 5-4-1120-5-20 | 81337 | 9 | | | | | |
| | 81337 | 12 | | | | | |
| 5-4-1121-5-5 | 81337 | 9 | | | | | |
| | 81337 | 12 | | | | | |
| 5-4-1126-14 | 81337 | 11 | | | | | |
| | 81337 | 14 | | | | | |
| 5-4-1129-1 | 81337 | 12 | | | | | |
| 5-4-1129-10 | 81337 | 12 | 4 | | | | |
| 5-4-116-10 | 81337 | 9 | 2 | | | | |
| 5-4-178-1-2 | 81337 | 8 | | | | | |
| 5-4-600-2-3 | 81337 | 4 | | | | | |
| 5-4-600ITEM2-1 | 81337 | 4 | 8 | | | | |
| 5-4-660-2-2 | 81337 | 4 | | | | | |
| | 81337 | 6 | | | | | |
| 5-4-660-2-4 | 1337 | 4 | | | | | |
| 5-4-660-2-5 | 81337 | 4 | | | | | |
| 5-4-660-207 | 81337 | 4 | | | | | |
| 5-4-660-3-3 | 81337 | 6 | | | | | |
| 5-4-660ITEM2-1 | 81337 | 6 | 5 | | | | |
| 5-4-660ITEM2-6 | 81337 | 4 | | | | | |
| | 81337 | 6 | | | | | |
| 5-4-664-1-2 | 81337 | 2 | | | | | |
| 5-4-664-1-3 | 81337 | 2 | | | | | |
| 5-4-664-1-4 | 81337 | 2 | | | | | |
| 5-4-664-1-7 | 81337 | 2 | | | | | |
| 5-4-664ITEM1- | 81337 | 2 | 10 | | | | |
| 5-4-713 | 81337 | 1 | | | | | |
| | 81337 | 7 | | | | | |
| 5-4-718-1-3 | 81337 | 8 | | | | | |
| 5-4-718-1-7 | 81337 | 8 | | | | | |
| 5-4-718-1-8 | 81337 | 8 | | | | | |
| 5-4-718ITEM1-1 | 81337 | 8 | 15 | | | | |
| 5-4-718ITEM1-4 | 81337 | 8 | 1 | | | | |
| 514-660-2-7 | 81337 | 6 | | | | | |
| 514-713 | 81337 | 3 | | | | | |

TM 10-8340-203-23P

By Order of the Secretary of the Army:

Official:

VERNE L. BOWERS
Major General, United States Army
The Adjutant General

CREIGHTON W. ABRAMS
General United States Army
Chief of Staff

Distribution:

To be distributed in accordance with DA Form 12-32, Section II (qty rqr block no. 538) Organizational Maintenance requirements for the Hawk Missile System.

RECOMMENDED CHANGES TO EQUIPMENT TECHNICAL PUBLICATIONS



THEN...JOT DOWN THE
DOPE ABOUT IT ON THIS FORM.
CAREFULLY TEAR IT OUT, FOLD IT
AND DROP IT IN THE MAIL.

SOMETHING WRONG WITH PUBLICATION

FROM: (PRINT YOUR UNIT'S COMPLETE ADDRESS)

DATE SENT

PUBLICATION NUMBER

PUBLICATION DATE

PUBLICATION TITLE

BE EXACT PIN-POINT WHERE IT IS

PAGE
NO.

PARA-
GRAPH

FIGURE
NO.

TABLE
NO.

IN THIS SPACE, TELL WHAT IS WRONG
AND WHAT SHOULD BE DONE ABOUT IT.

TEAR ALONG PERFORATED LINE

PRINTED NAME, GRADE OR TITLE AND TELEPHONE NUMBER

SIGN HERE

The Metric System and Equivalents

Linear Measure

1 centimeter = 10 millimeters = .39 inch
 1 decimeter = 10 centimeters = 3.94 inches
 1 meter = 10 decimeters = 39.37 inches
 1 dekameter = 10 meters = 32.8 feet
 1 hectometer = 10 dekameters = 328.08 feet
 1 kilometer = 10 hectometers = 3,280.8 feet

Weights

1 centigram = 10 milligrams = .15 grain
 1 decigram = 10 centigrams = 1.54 grains
 1 gram = 10 decigrams = .035 ounce
 1 dekagram = 10 grams = .35 ounce
 1 hectogram = 10 dekagrams = 3.52 ounces
 1 kilogram = 10 hectograms = 2.2 pounds
 1 quintal = 100 kilograms = 220.46 pounds
 1 metric ton = 10 quintals = 1.1 short tons

Liquid Measure

1 centiliter = 10 milliliters = .34 fl. ounce
 1 deciliter = 10 centiliters = 3.38 fl. ounces
 1 liter = 10 deciliters = 33.81 fl. ounces
 1 dekaliter = 10 liters = 2.64 gallons
 1 hectoliter = 10 dekaliters = 26.42 gallons
 1 kiloliter = 10 hectoliters = 264.18 gallons

Square Measure

1 sq. centimeter = 100 sq. millimeters = .155 sq. inch
 1 sq. decimeter = 100 sq. centimeters = 15.5 sq. inches
 1 sq. meter (centare) = 100 sq. decimeters = 10.76 sq. feet
 1 sq. dekameter (are) = 100 sq. meters = 1,076.4 sq. feet
 1 sq. hectometer (hectare) = 100 sq. dekameters = 2.47 acres
 1 sq. kilometer = 100 sq. hectometers = .386 sq. mile

Cubic Measure

1 cu. centimeter = 1000 cu. millimeters = .06 cu. inch
 1 cu. decimeter = 1000 cu. centimeters = 61.02 cu. inches
 1 cu. meter = 1000 cu. decimeters = 35.31 cu. feet

Approximate Conversion Factors

| To change | To | Multiply by | To change | To | Multiply by |
|---------------|--------------------|-------------|--------------------|---------------|-------------|
| inches | centimeters | 2.540 | ounce-inches | newton-meters | .007062 |
| feet | meters | .305 | centimeters | inches | .394 |
| yards | meters | .914 | meters | feet | 3.280 |
| miles | kilometers | 1.609 | meters | yards | 1.094 |
| square inches | square centimeters | 6.451 | kilometers | miles | .621 |
| square feet | square meters | .093 | square centimeters | square inches | .155 |
| square yards | square meters | .836 | square meters | square feet | 10.764 |
| square miles | square kilometers | 2.590 | square meters | square yards | 1.196 |
| acres | square hectometers | .405 | square kilometers | square miles | .386 |
| cubic feet | cubic meters | .028 | square hectometers | acres | 2.471 |
| cubic yards | cubic meters | .765 | cubic meters | cubic feet | 35.315 |
| fluid ounces | milliliters | 29.573 | cubic meters | cubic yards | 1.308 |
| pints | liters | .473 | milliliters | fluid ounces | .034 |
| quarts | liters | .946 | liters | pints | 2.113 |
| gallons | liters | 3.785 | liters | quarts | 1.057 |
| ounces | grams | 28.349 | liters | gallons | .264 |
| pounds | kilograms | .454 | grams | ounces | .035 |
| short tons | metric tons | .907 | kilograms | pounds | 2.205 |
| pound-feet | newton-meters | 1.356 | metric tons | short tons | 1.102 |
| pound-inches | newton-meters | .11296 | | | |

Temperature (Exact)

°F Fahrenheit temperature 5/9 (after subtracting 32) Celsius temperature °C

PIN: 028451-000